

# eCSE05-05: Open source exascale multi-scale framework for the UK solid mechanics community

A. Shterenlikht<sup>1</sup>, L. Margetts<sup>2</sup>, L. Cebamanos<sup>3</sup>

<sup>1</sup>Mech Eng Dept, The University of Bristol, Bristol BS8 1TR, UK,  
mexas@bris.ac.uk

<sup>2</sup>School of Mechanical, Aero and Civil Engineering, The University of Manchester,  
Manchester M13 9PL, UK, Lee.Margetts@manchester.ac.uk

<sup>3</sup>Edinburgh Parallel Computing Centre (EPCC), The University of Edinburgh,  
King's Buildings, Edinburgh EH9 3FD, UK, l.cebamanos@epcc.ed.ac.uk



# Table of Contents

Why multi-scale modelling of fracture?

Cellular automata

Fortran coarrays

ParaFEM - open source parallel FEA

CAFE: MPI to coarrays mapping

CrayPAT profiling, tracing and optimisation

TAU profiling

Unresolved issues and future work

# Table of Contents

Why multi-scale modelling of fracture?

Cellular automata

Fortran coarrays

ParaFEM - open source parallel FEA

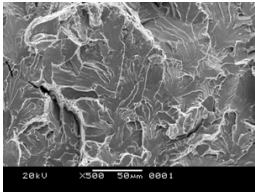
CAFE: MPI to coarrays mapping

CrayPAT profiling, tracing and optimisation

TAU profiling

Unresolved issues and future work

# Fracture in heterogeneous materials



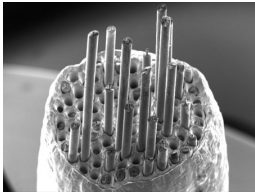
polycrystal cleavage



reinforced concrete



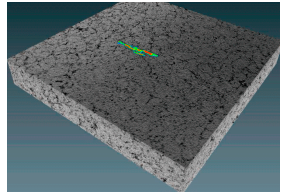
CFRP



metal matrix



bone

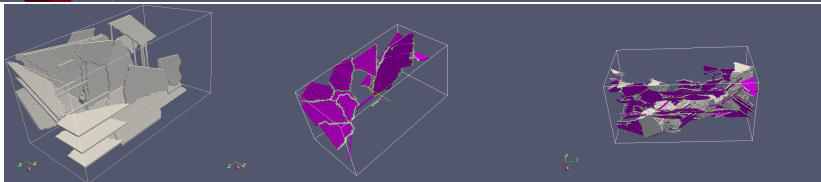
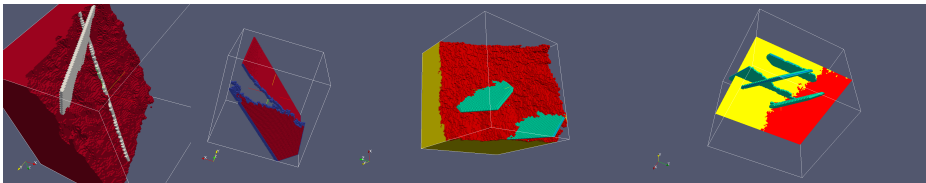


graphite

- ▶ All real materials are heterogeneous
- ▶ Multiple fracture and damage processes happen at different time and length scales → **need multi-scale framework**

# Fracture: CA + FE = CAFE multi-scale model ▶ CGPACK

- ▶ **Structured grids** - cellular automata (CA), **unstructured grids** - finite elements (FE)
- ▶ CA (microstructure) + FE (continuum mechanics) = CAFE
- ▶ Transgranular cleavage - fracture stress or strain criteria
- ▶ FE  $\rightarrow$  CA (localisation) - stress, strain fields
- ▶ CA  $\rightarrow$  FE (homogenisation) - damage variables



# Table of Contents

Why multi-scale modelling of fracture?

**Cellular automata**

Fortran coarrays

ParaFEM - open source parallel FEA

CAFE: MPI to coarrays mapping

CrayPAT profiling, tracing and optimisation

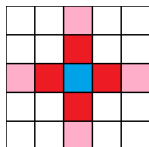
TAU profiling

Unresolved issues and future work

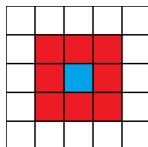
# Cellular automata (CA) basics

- ▶ discrete space, discrete time, discrete states - fully digital framework, **structured grids**
- ▶ finite or infinite space
- ▶ finite space: fixed or self-similar boundaries

- ▶ cell neighbourhood, e.g. von Neumann's:



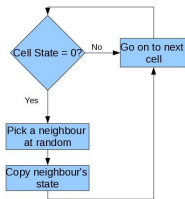
or Moore's:



- ▶ iterative process
- ▶ state of a cells at next iteration is a function of the state of this cells and of the states of its neighbourhood cells at the current iteration

# Primitive 3D solidification - probabilistic CA

- ▶ States: liquid = 0, crystals > 0.
- ▶ Cell state uniquely encodes crystal orientation tensor, i.e. a look-up table.
- ▶ Each iteration a liquid cell acquires a state of a randomly chosen neighbour (3D Moore's neighbourhood - 26 cells).



0	0	0	0	0	1	1	1	1
0	0	0	0	0	1	1	1	1
0	0	0	0	0	1	1	1	1
0	0	0	0	0	1	1	24	24
0	0	0	0	0	24	1	24	24
0	0	0	0	0	24	24	24	24
0	0	0	0	0	24	24	24	24
0	0	0	0	0	24	24	24	24
0	0	0	0	0	24	24	24	24
0	0	0	0	0	24	24	24	24

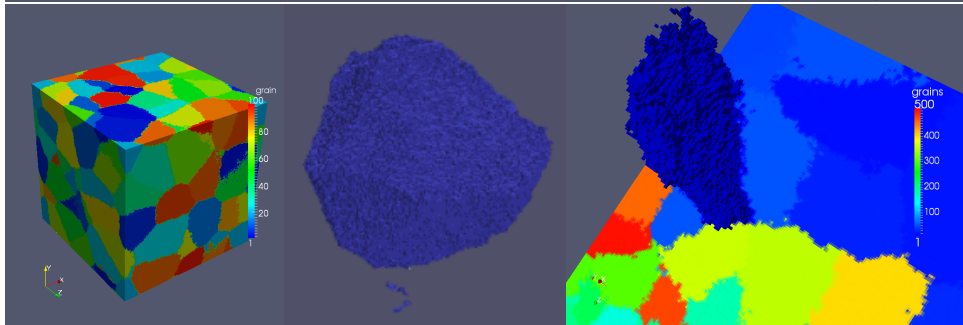
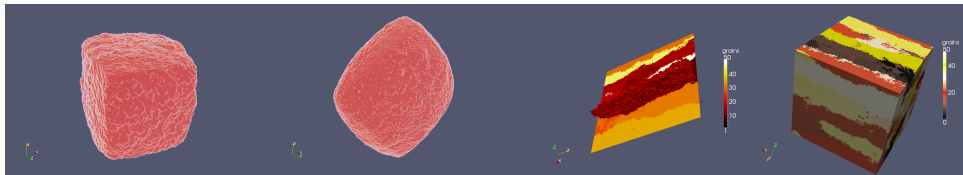
$i$

0	0	0	1	1	1	1	1	1
0	0	0	0	1	1	1	1	1
0	0	0	1	1	1	1	1	1
0	0	0	0	24	1	1	24	24
0	0	0	0	0	24	1	24	24
0	0	0	0	0	24	24	24	24
0	0	0	24	24	24	24	24	24
0	0	24	24	24	24	24	24	24
0	0	24	24	24	24	24	24	24

$i + 1$



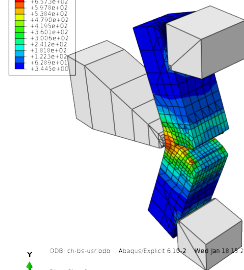
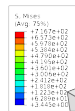
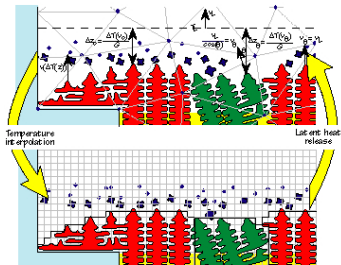
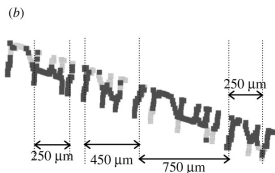
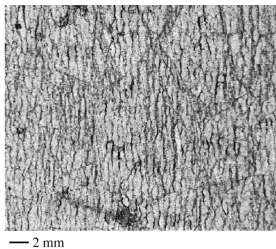
# Primitive probabilistic 3D solidification - results



For more results [▶ CGPACK](#)

# CA with fields

- ▶ Used for solidification [1], recrystallisation [2] and fracture [3, 4].
- ▶ FE - continuum mechanics - stress, strain, etc.
- ▶ CA - crystals, crystal boundaries, cleavage, grain boundary fracture
- ▶ FE  $\rightarrow$  CA - stress, strain
- ▶ CA  $\rightarrow$  FE - damage variables



ODB: ch-bis-usr-040 - Abaqus/Explicit 6.13.2 - Wed Jan 16 14:21:40 GMT 20

Step: Step-1  
 Increment: 9010; Step Time = 1.30016-03  
 Primary Var: S, Mises  
 Deformed Var: U; Deformation Scale Factor = +1.000e+00



# Table of Contents

Why multi-scale modelling of fracture?

Cellular automata

**Fortran coarrays**

ParaFEM - open source parallel FEA

CAFE: MPI to coarrays mapping

CrayPAT profiling, tracing and optimisation

TAU profiling

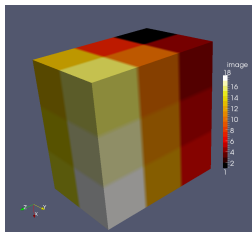
Unresolved issues and future work

# Fortran coarrays for CA

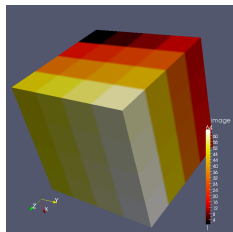
- ▶ Fortran native SPMD parallel programming feature
- ▶ Fortran standard since 2008. More features in 2015.
- ▶ Cray, Intel, OpenCoarrays/GCC support
- ▶ CGPACK - cellular automata microstructure simulation library: [cgpack.sf.net](http://cgpack.sf.net). See also [5, 6, 7].
- ▶ Easy halo exchange
- ▶ CA space coarray - 4D array, 3 codimensions:

```
integer, allocatable :: space (:, :, :, :)[:, :, :, :]
```

- ▶ Ideal for **structured** grids:

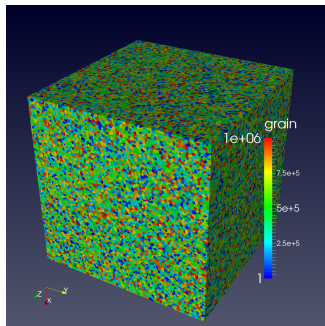
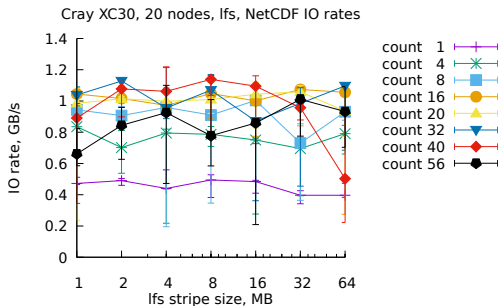


← 18 imgs; 64 imgs →

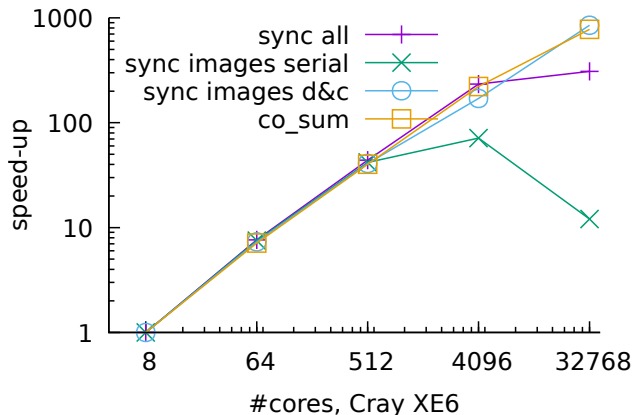


# Coarray IO - no native Fortran parallel IO

- ▶ MPI/IO up to 2.3GB/s on Cray XE6 [▶ BCS talk](#)
- ▶ MPI/IO up to 8GB/s on Cray XC30 (can reach 14GB/s [8])
- ▶ NetCDF 4.3, HDF5 1.8.14 - only up to 1.2GB/s on Cray XC30.
- ▶ lfs stripe count, size, number of images, file size, Cray hugepages...
- ▶ 0.5 - 1TB datasets



## CGPACK solidification scaling



Scaling varies for different programs built with CGPACK, depending on which routines are called, in what order and requirements for synchronisation.

# Table of Contents

Why multi-scale modelling of fracture?

Cellular automata

Fortran coarrays

**ParaFEM - open source parallel FEA**

CAFE: MPI to coarrays mapping

CrayPAT profiling, tracing and optimisation

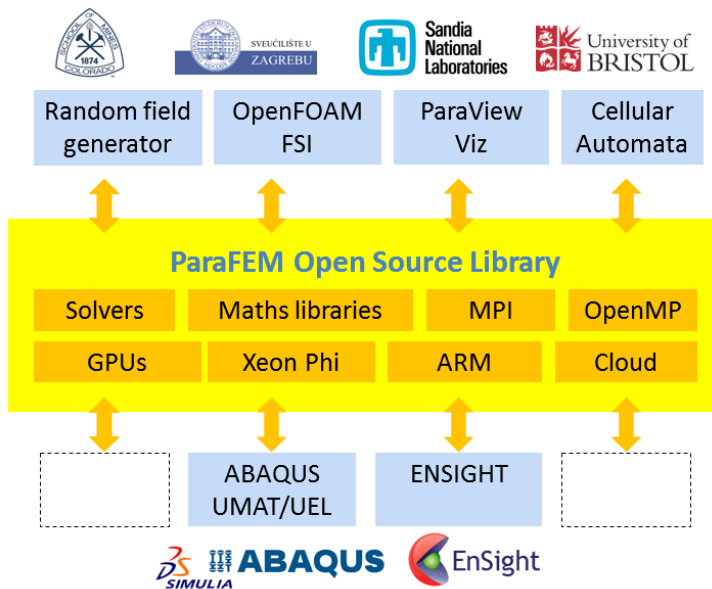
TAU profiling

Unresolved issues and future work





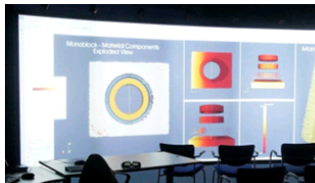
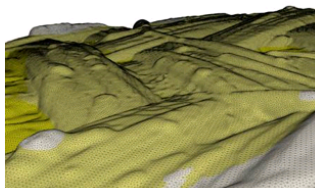
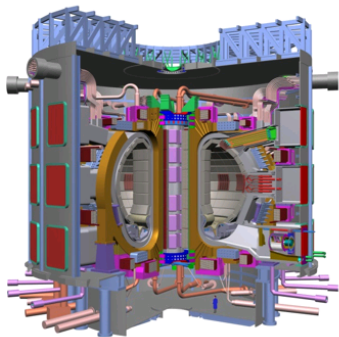
# ParaFEM library interfaces



# ParaFEM examples - nuclear fusion

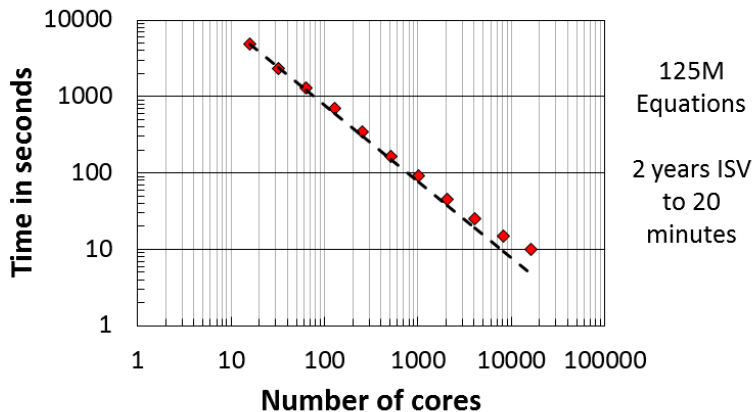
simpleware

CCFE  
CULHAM CENTRE FOR  
FUSION ENERGY

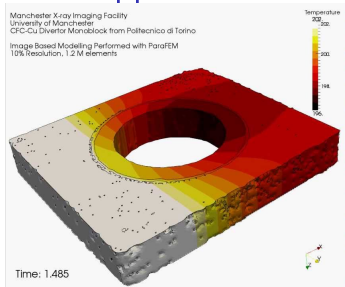


## Image-based transient thermal analysis

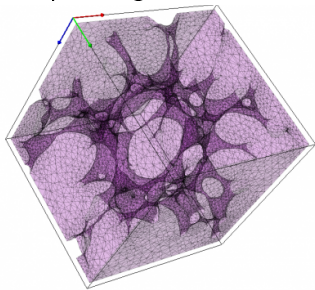
## Transient Thermal Analysis (1 step)



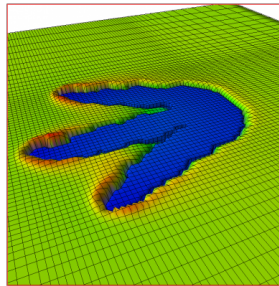
# ParaFEM application areas



power generation



micro-mechanics



paleontology



# Table of Contents

Why multi-scale modelling of fracture?

Cellular automata

Fortran coarrays

ParaFEM - open source parallel FEA

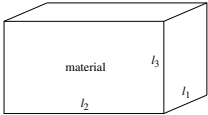
**CAFE: MPI to coarrays mapping**

CrayPAT profiling, tracing and optimisation

TAU profiling

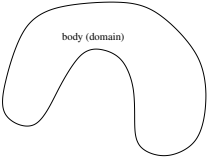
Unresolved issues and future work

# CAFE design: structured CA grid + unstructured FE grid



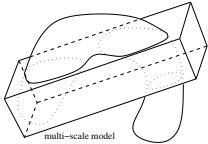
CA

+

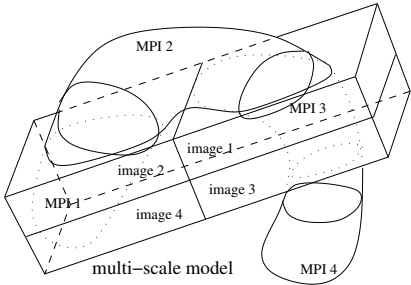


FE

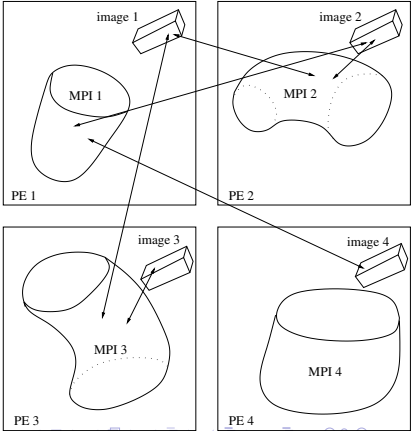
=



CAFE



Example with 4 PE (4 MPI processes, 4 coarray images). Arrows are FE  $\leftrightarrow$  CA comms.



FE → CA mapping via a private allocatable array of derived type:

```
type mcen
  integer :: image, elnum
  real :: centr(3)
end type mcen
type( mcen ), allocatable :: lcentr(:)
```

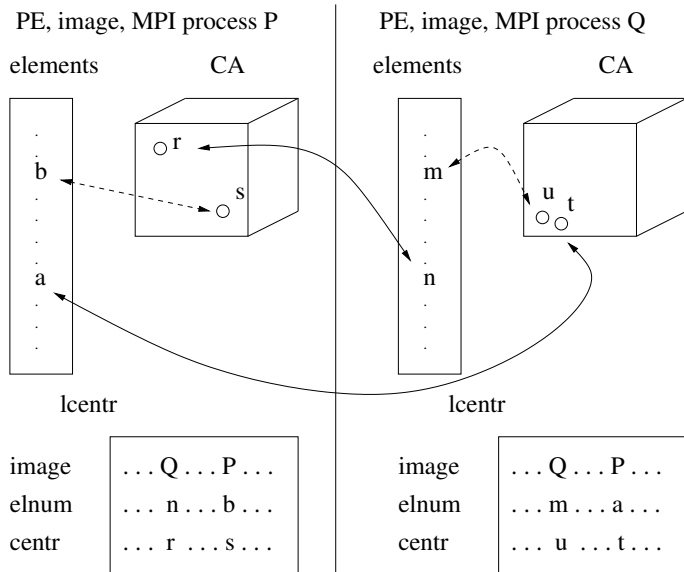
based on coordinates of FE centroids calculated by each MPI process and stored in centroid\_tmp coarray:

```
type rca
  real, allocatable :: r(:, :)
end type rca
type( rca ) :: centroid_tmp[*]
:
allocate( centroid_tmp%r(3, nels_pp) )
```

where nels\_pp is the number of FE stored on this PE.



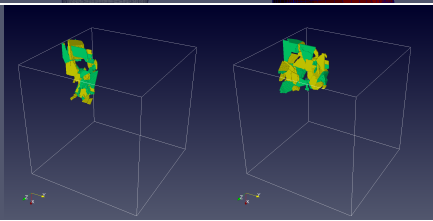
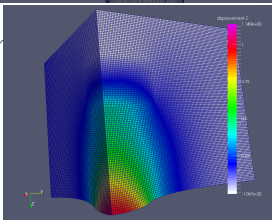
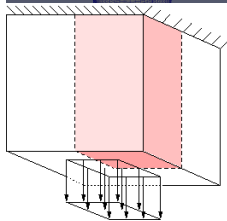
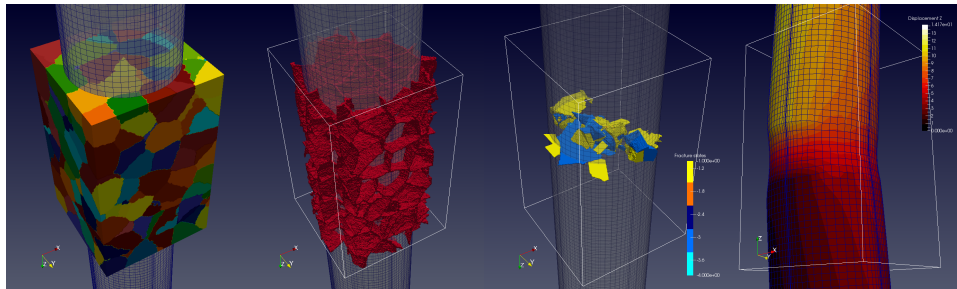
# lcentr arrays on images P and Q



# Fracture modelling

- ▶ Diverse CAFE fracture models can be constructed from CGPACK + ParaFEM libraries.
- ▶ Simple case: isotropic linear elastic FE ( $E, \nu$ ) + cleavage (fully brittle transgranular fracture mode) CA.
- ▶ FE stress tensor  $\mathbf{t}$  passed to CA, resolved on normal stresses on  $\{100\}$  and  $\{110\}$  crystal planes -  $t_{100}, t_{110}$  [5, 10].
- ▶ 2 parameters - fracture stress,  $\sigma_F$ , linked to the free surface energy,  $\gamma$ , and a characteristic length,  $L$ .
- ▶ If  $t_{100} \geq \sigma_F$  or  $t_{110} \geq \sigma_F$  then a CA crack extends by  $L$  per unit of time.
- ▶ Crack morphology is reduced to a single damage variable,  $d$ .  $d = 1$  initially (no damage).  $d = 0$  - integration point has failed, no load bearing capacity.

# CAFE fracture results



Watch animations at [CGPACK site](#)

# Table of Contents

Why multi-scale modelling of fracture?

Cellular automata

Fortran coarrays

ParaFEM - open source parallel FEA

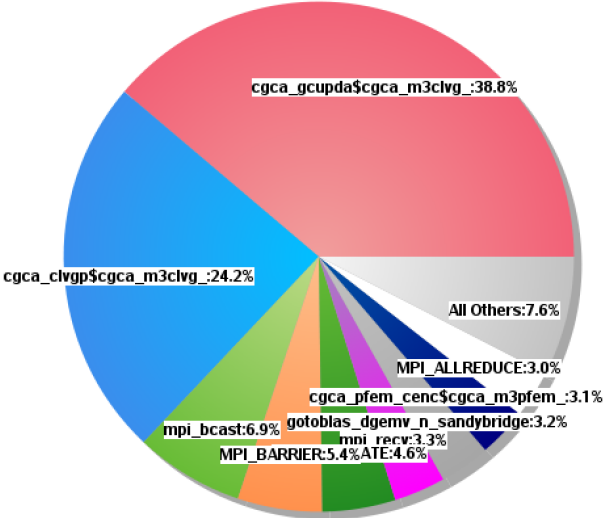
CAFE: MPI to coarrays mapping

**CrayPAT profiling, tracing and optimisation**

TAU profiling

Unresolved issues and future work

# CrayPAT profiling 1



Profiling function distribution for ParaFEM/CGPACK MPI/coarray miniapp with all-to-all routine cgca\_gcupda at 7200 cores.

## CrayPAT profiling 2

```
100.0% | 20,520.4 |    -- |    -- |Total
|-----|
| 71.4% | 14,649.9 |    -- |    -- |USER
|-----|
| 38.7% | 7,950.6 | 913.4 | 10.3% |cgca_gcupda$cgca_m3clvg_
| 24.1% | 4,951.2 | 940.8 | 16.0% |cgca_clvgp$cgca_m3clvg_
| 3.1% | 638.0 | 70.0 | 9.9% |cgca_pfem_cenc$cgca_m3pfem_
| 1.8% | 367.5 | 578.5 | 61.2% |cgca_hxi$cgca_m2hx_
| 1.7% | 346.0 | 196.0 | 36.2% |cgca_clvgn$cgca_m3clvg_
|=====|
| 19.8% | 4,061.4 |    -- |    -- |MPI
|-----|
| 6.9% | 1,413.5 | 356.5 | 20.1% |mpi_bcast
| 5.4% | 1,098.3 | 419.7 | 27.7% |MPI_BARRIER
| 3.3% | 670.0 | 322.0 | 32.5% |mpi_recv
| 3.0% | 615.3 | 61.7 | 9.1% |MPI_ALLREDUCE
|=====|
| 8.8% | 1,797.2 |    -- |    -- |ETC
|-----|
| 4.6% | 950.5 | 5.5 | 0.6% |__DEALLOCATE
| 3.2% | 654.2 | 110.8 | 14.5% |gotoblas_dgemv_n_sandybridge
|=====|
```

Raw profiling data for ParaFEM/CGPACK MPI/coarray miniapp with all-to-all routine cgca\_gcupda at 7200 cores.

## cgca\_gcupda - all-to-all

```
integer :: gcupd(100,3)[*], rndint, j, &  
         img, gcupd_local(100,3)  
real    :: rnd  
:  
call random_number( rnd )  
rndint = int( rnd*num_images() ) + 1  
do j = rndint, rndint + num_images() - 1  
  img = j  
  if (img .gt. num_images()) &  
    img = img - num_images()  
  if (img .eq. this_image()) cycle  
  :  
  gcupd_local(:,j) = gcupd(:,j)[img]  
  :  
end do
```

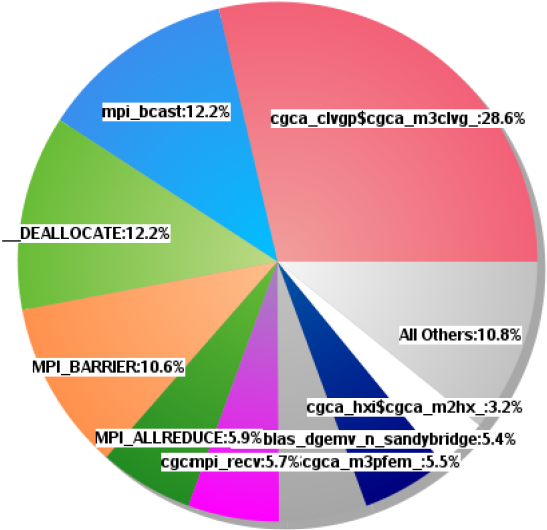
## cgca\_gcupdn - nearest neighbour

```
do i = -1 , 1
do j = -1 , 1
do k = -1 , 1
  ! Get the coindex set of the neighbour
  ncod = mycod + (/ i , j , k /)
  :
  gcupd_local (: , :) = &
    gcupd (: , :) [ncod(1) , ncod(2) , ncod(3)]
  :
end do
end do
end do
```

Note: the nearest neighbour must be called *multiple times* to propagate changes from every image to all other images.



# CrayPAT profiling cgca\_gcupdn



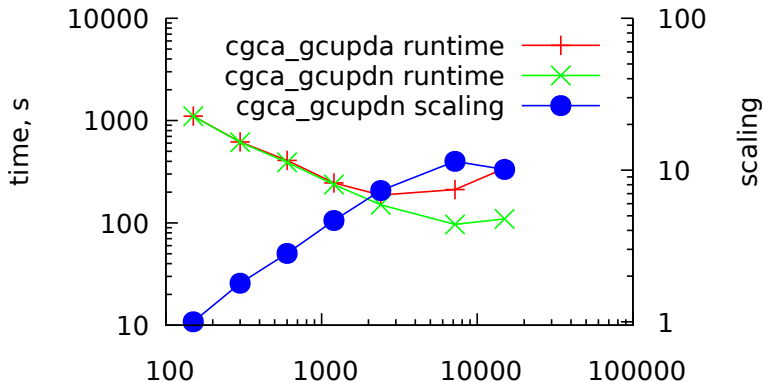
Profiling function distribution for ParaFEM/CGPACK MPI/coarray miniapp with the nearest neighbour routine cgca\_gcupdn at 7200 cores.

# CrayPAT profiling cgca\_gcupdn

```
100.0% | 12,199.5 | -- | -- |Total
-----
 44.8% | 5,459.7 | -- | -- |USER
-----
 28.6% | 3,484.0 | 582.0 | 14.3% |cgca_clvgn$cgca_m3clvg_
 5.5% | 666.1 | 93.9 | 12.4% |cgca_pfem_cenc$cgca_m3pfem_
 3.2% | 393.1 | 752.9 | 65.7% |cgca_hxi$cgca_m2hx_
 2.8% | 346.0 | 176.0 | 33.7% |cgca_clvgn$cgca_m3clvg_
 1.4% | 165.2 | 37.8 | 18.6% |cgca_sld$cgca_m3sld_
 1.0% | 126.0 | 82.0 | 39.4% |xx14_
=====
 36.7% | 4,472.1 | -- | -- |MPI
-----
 12.2% | 1,484.4 | 380.6 | 20.4% |mpi_bcast
 10.6% | 1,287.9 | 389.1 | 23.2% |MPI_BARRIER
 5.9% | 714.9 | 90.1 | 11.2% |MPI_ALLREDUCE
 5.7% | 689.4 | 338.6 | 32.9% |mpi_recv
 1.5% | 179.1 | 417.9 | 70.0% |MPI_REDUCE
=====
 18.5% | 2,256.1 | -- | -- |ETC
-----
 12.1% | 1,480.9 | 4.1 | 0.3% |__DEALLOCATE
 5.4% | 653.8 | 95.2 | 12.7% |gotoblas_dgemv_n_sandybridge
=====
```

Raw profiling data for ParaFEM/CGPACK MPI/coarray miniapp with the nearest neighbour routine cgca\_gcupdn at 7200 cores.

# Scaling improvement with cgca\_gcupdn over cgca\_gcupda

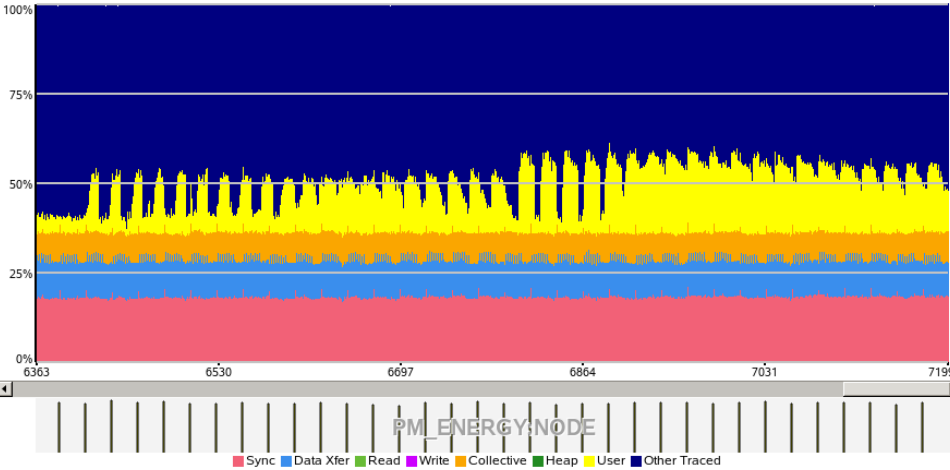


Number of cores, ARCHER, Cray XC30

Runtimes and scaling for ParaFEM/CGPACK MPI/coarray miniapp with the nearest neighbour, cgca\_gcupdn, and all-to-all, cgca\_gcupda, algorithms.

Scaling limit increased from 2k to 7k cores.

# CrayPAT - load imbalance on 7k cores on Cray XC30



Whole program activity, shown in % total time per process.  
Processes 6363 to 7199 are shown.

# Issues with CrayPAT

```
| 71.4% | 14,649.9 | -- | -- |USER
|-----|
| 38.7% | 7,950.6 | 913.4 | 10.3% |cgca_gcupda$cgca_m3clvg_
| 24.1% | 4,951.2 | 940.8 | 16.0% |cgca_clvgp$cgca_m3clvg_
| 3.1% | 638.0 | 70.0 | 9.9% |cgca_pfem_cenc$cgca_m3pfem_
| 1.8% | 367.5 | 578.5 | 61.2% |cgca_hxi$cgca_m2hx_
| 1.7% | 346.0 | 196.0 | 36.2% |cgca_clvgn$cgca_m3clvg_
|=====
```

cgca\_gcupda is top in sampling results, but is absent from tracing.  
It is called the same number of times as cgca\_hxi.

```
| 29.7% | 99.743118 | -- | -- | 5,226,813.1 |USER
|-----|
| 17.4% | 58.326659 | 36.082315 | 38.2% | 5.0 |cgca_clvgp$cgca_m3clvg_
| 5.6% | 18.876152 | 5.062089 | 21.1% | 1.0 |cgca_pfem_cenc$cgca_m3pfem_
| 3.3% | 11.145318 | 15.328335 | 57.9% | 1.0 |xx14_
| 1.7% | 5.705317 | 8.788733 | 60.6% | 5,224,771.1 |cgca_clvgn$cgca_m3clvg_
| 1.7% | 5.689672 | 1.910819 | 25.1% | 2,035.0 |cgca_hxi$cgca_m2hx_
|=====
```

# Issues with CrayPAT

All profiling was done with single thread.

CrayPat/X: Version **6.2.2** Revision **13378** (xf **13240**) **11/20/14 14:32:58**

Number of PEs (MPI ranks): **480**

Numbers of PEs per Node: **24** PEs on each of **20** Nodes

Numbers of Threads per PE: **3**

Number of Cores per Socket: **12**

Execution start time: Thu Mar **3 13:40:17 2016**

System name and speed: tdsmom **2701** MHz

Incorrect number of threads identified by CrayPAT in a tracing experiment of ParaFEM/CGPACK MPI/coarray miniapp with cgca\_gcupda.

## Establishing lcentr array

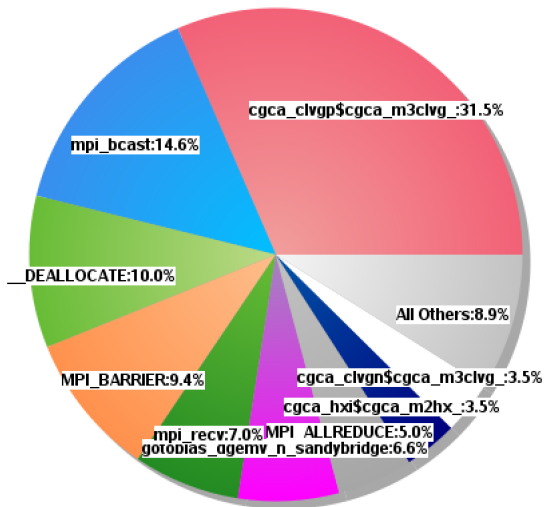
- ▶ Array lcentr is established by subroutine cgca\_pfm\_cenc which uses all-to-all comms.
- ▶ Subroutine cgca\_pfm\_map uses large temporary arrays and coarray collectives `co_sum` and `co_max`, parts of Fortran 2015 standard [11, 12].

## Comms structure in cgca\_pfem\_map

```
integer :: maxfe, pos_start, pos_end, ctmpsize
real, allocatable :: tmp(:, :)
! Calculate the max number of FEs on any image
maxfe = size( centroid_tmp%r, dim=2 )
ctmpsize = maxfe
call co_max( maxfe )
allocate( tmp( maxfe * num_images(), 5 ), source=0.0 )
! Writes my data in a unique portion of tmp
pos_start = ( this_image() - 1 ) * maxfe + 1
pos_end = pos_start + ctmpsize - 1
tmp( pos_start : pos_end, 1 ) = &
    real( this_image(), kind=4 )
! Write element number *as real*
tmp( pos_start : pos_end, 2 ) = &
    real( (/ (j, j = 1, ctmpsize) /), kind=4 )
! Write centroid coord
tmp( pos_start : pos_end, 3:5 ) = &
    transpose( centroid_tmp%r(:, :) )
call co_sum( tmp )
```



## Profiling with cgca\_pfem\_map



Profiling function distribution for ParaFEM/CGPACK MPI/coarray miniapp with cgca\_gcupdn and cgca\_pfem\_map at 7200 cores.

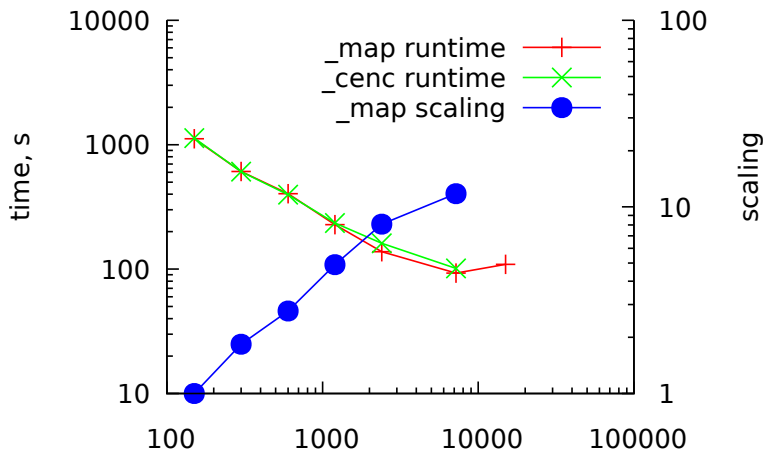
# Profiling with cgca\_pfem\_map

Table 1: Profile by Function

Samp%	Samp	Imb. Samp	Imb. Samp%	Group	Function
100.0%	9,903.4	--	--	Total	
-----					
43.6%	4,321.6	--	--	USER	
-----					
31.4%	3,110.7	589.3	15.9%	cgca_clvgp\$cgca_m3clvg_	
3.5%	346.0	513.0	59.7%	cgca_hxi\$cgca_m2hx_	
3.5%	342.0	175.0	33.8%	cgca_clvgn\$cgca_m3clvg_	
1.2%	116.3	4.7	3.9%	cgca_pfem_map\$cgca_m3pfem_	
1.1%	106.8	1,537.2	93.5%	cgca_clvgsd\$cgca_m3clvg_	
1.0%	99.9	24.1	19.5%	cgca_sld\$cgca_m3sld_	
=====					
38.4%	3,803.6	--	--	MPI	
-----					
14.6%	1,446.6	350.4	19.5%	mpi_bcast	
9.4%	932.4	473.6	33.7%	MPI_BARRIER	
7.0%	689.5	371.5	35.0%	mpi_recv	
4.9%	489.3	76.7	13.6%	MPI_ALLREDUCE	
1.5%	145.4	314.6	68.4%	MPI_REDUCE	
=====					
17.8%	1,766.8	--	--	ETC	
-----					
9.9%	983.9	8.1	0.8%	__DEALLOCATE	
6.6%	652.3	93.7	12.6%	gotoblas_dgemv_n_sandybridge	
=====					

Raw profiling data for ParaFEM/CG-PACK MPI/coarray miniapp with cgca\_gcupdn and cgca\_pfem\_map at 7200 cores.

## Profiling with cgca\_pfem\_map



Runtimes and scaling for ParaFEM/CGPACK MPI/coarray miniapp with cgca\_pfem\_map and cgca\_pfem\_cenc.

cgca\_pfem\_map or cgca\_pfem\_cenc are called only once during the execution of the miniapp. Hence only a minor improvement is obtained, only from about 1000 cores.

# Table of Contents

Why multi-scale modelling of fracture?

Cellular automata

Fortran coarrays

ParaFEM - open source parallel FEA

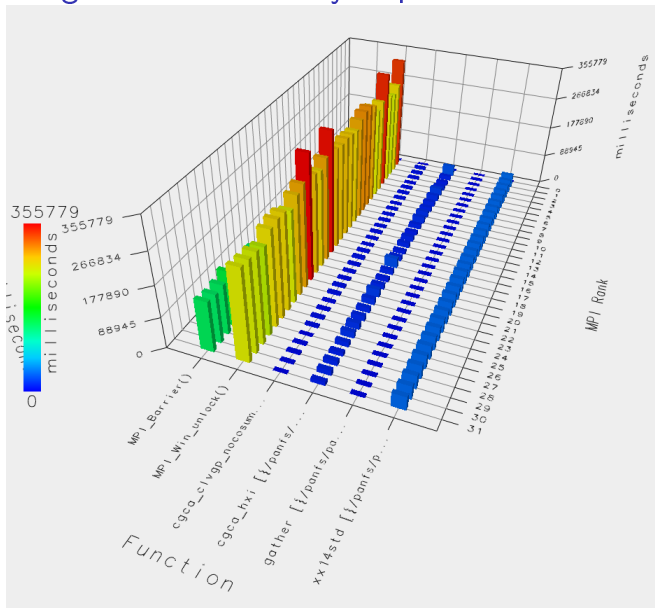
CAFE: MPI to coarrays mapping

CrayPAT profiling, tracing and optimisation

**TAU profiling**

Unresolved issues and future work

# TAU profiling: Intel 16 coarray implementation - MPI RMA



2x 16-core nodes, 32 images. Poor optimisation?

# Table of Contents

Why multi-scale modelling of fracture?

Cellular automata

Fortran coarrays

ParaFEM - open source parallel FEA

CAFE: MPI to coarrays mapping

CrayPAT profiling, tracing and optimisation

TAU profiling

Unresolved issues and future work

## CA - coarray (over)synchronisation?

```
call cgca_nr( space ) ! sync all inside
call cgca_rt( grt )   ! sync all inside
call cgca_sld( space ) ! sync all inside
call cgca_igb( space )
sync all
call cgca_hxi( space )
sync all
call cgca_gbs( space )
sync all
call cgca_hxi( space )
sync all
call cgca_gcu( space ) ! local routine no sync
```

- ▶ All images sync with their 26 neighbours.
- ▶ Some routines have sync inside.
- ▶ Other sync responsibility is left to end user.

## Fortran 2015 events: more flexible than SYNC IMAGES [12]

```
use, intrinsic iso_fortran_env, only: event_type
type(event_type) :: var[:, :, :]
integer, allocatable :: space(:, :, :, :)[:, :, :]
integer :: errstat, myrank(3)
! allocate var, space
myrank = this_image( space )
! do some work, then notify neighbours
event post( var[ myrank(1)-1, myrank(2),      &
                myrank(3) ], stat=errstat )
! 25 more posts
:
event wait( var, until_count=26, stat=errstat )
! when all 26 neighbours posted, continue work
:
```



## Future: thread level parallelism: OpenMP, DO CONCURRENT


```
main: do iter = 1,N
  do x3 = lbr(3), ubr(3)
  do x2 = lbr(2), ubr(2)
  do x1 = lbr(1), ubr(1)
    live: if ...
      call cgca_clvgn( clvgflag )
      if ( clvgflag ) call sub( space )
    end if live
  end do
end do
end do
end do
call co_sum( clvgglob )
sync all
call cgca_hxi( space )
sync all
call cgca_dacf( space )
```

# Conclusions

- ▶ Fortran coarrays are an ideal match for cellular automata
- ▶ Hybrid coarray+MPI multi-scale fracture framework is feasible
- ▶ Scaling up to 7k cores currently, work ongoing
- ▶ Profiling/tracing tools: CrayPAT, TAU, Score-P, Scalasca - coarray support is improving
- ▶ Coarray synchronisation - major issue: data integrity & performance

# Acknowledgements

- ▶ This work was funded under the embedded CSE programme of the ARCHER UK National Supercomputing Service (<http://www.archer.ac.uk>), [▶ archer.ac.uk](http://www.archer.ac.uk)
- ▶ This work was carried out using the computational facilities of the Advanced Computing Research Centre, University of Bristol - <https://www.acrc.bris.ac.uk>, [▶ www.acrc.bris.ac.uk](https://www.acrc.bris.ac.uk)

- [1] C. A. Gandin and M. Rappaz. A coupled finite element-cellular automaton model for the prediction of dendritic grain structures in solidification processes. *Acta Met. and Mat.*, 42(7):2233–2246, 1994.
- [2] C. Zheng and D. Raabe. Interaction between recrystallization and phase transformation during intercritical annealing in a cold-rolled dual-phase steel: A cellular automaton model. *Acta Materialia*, 61:5504–5517, 2013.
- [3] A. Shterenlikht and I. C. Howard. The CAFE model of fracture – application to a TMCR steel. *Fatigue Fract. Eng. Mater. Struct.*, 29:770–787, 2006.
- [4] S. Das, A. Shterenlikht, I. C. Howard, and E. J. Palmiere. A general method for coupling microstructural response with structural performance. *Proc. Roy. Soc. A*, 462:2085–2096, 2006.
- [5] A. Shterenlikht and L. Margetts. Three-dimensional cellular automata modelling of cleavage propagation across crystal boundaries in polycrystalline microstructures. *Proc. Roy. Soc. A*, 471:20150039, 2015.
- [6] A. Shterenlikht, L. Margetts, L. Cebamanos, and D. Henty. Fortran 2008 coarrays. *ACM Fortran Forum*, 34:10–30, 2015.
- [7] A. Shterenlikht. Fortran coarray library for 3D cellular automata microstructure simulation. In M. Weiland, A. Jackson, and N. Johnson, editors, *Proc. 7th PGAS Conf., 3-4 October 2013, Edinburgh, Scotland, UK*, pages 16–24. The University of Edinburgh, 2014.
- [8] D. Henty, A. Jackson, C. Moulinec, and V. Szeremi. Performance of Parallel IO on ARCHER, version 1.1. ARCHER White Papers, 2015.
- [9] I. M. Smith, D. V. Griffiths, and L. Margetts. *Programming the Finite Element Method*. Wiley, 5ed, 2014.
- [10] A. Shterenlikht, S. Margetts, L. McDonald, and N. K. Bourne. Towards mechanism-based simulation of impact damage using exascale computing. In  51/51

- [11] ISO/IEC JTC1/SC22/WG5 N2074. *TS 18508 Additional Parallel Features in Fortran*. 2015.
- [12] B. Long. Additional parallel features in Fortran. *ACM Fortran Forum*, 35:16–23, 2016.