

# Monthly Reporting

## Report from 01 June 2015 to 30 June 2015

### Report for Resource Pool XC on ARCHER

A total of 1,275,263.997 kAU were available during this period.

#### Use and Allocations (by Project)

In the following table Charged refers to usage which was charged against the project Allocation. This excludes any usage discounted via incentive schemes. The (Allocation) column is the time allocated to the project, scaled according to the reporting period and shown as a fraction of the available resources.

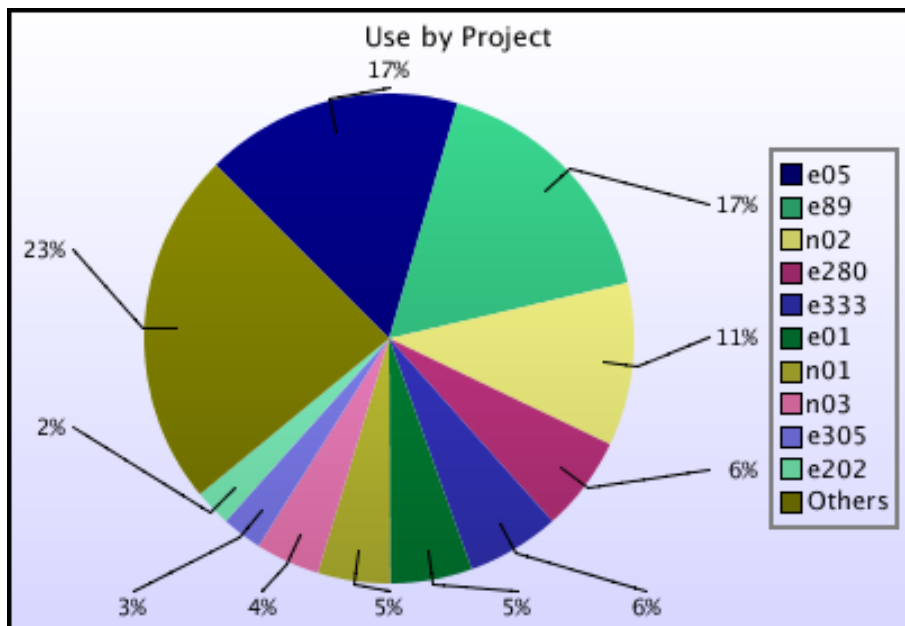
Project	Project Class	Number of Jobs	Charged kAUs	Charged Utilisation	Used kAUs	Utilisation	Allocated kAUs	Allocation
e01	Consortia	1,260	44,087.5	3.46%	59,750.2	4.69%	90,400.3	7.09%
e05	Consortia	13,393	183,220.6	14.37%	187,817.9	14.73%	170,966.0	13.41%
e89	Consortia	15,238	184,848.0	14.49%	186,137.7	14.60%	154,458.0	12.11%
e280	Consortia	5,429	69,368.7	5.44%	69,368.8	5.44%	49,717.0	3.90%
e281	Consortia	864	24,951.7	1.96%	24,958.8	1.96%	26,522.2	2.08%
e283	Consortia	341	5,105.1	0.40%	5,105.6	0.40%	21,118.6	1.66%
e305	Consortia	555	29,543.4	2.32%	29,543.5	2.32%	27,411.4	2.15%
e410	Leadership Awards	91	3,089.3	0.24%	3,089.3	0.24%	7,254.7	0.57%
e411	Leadership Awards	1,714	10,455.0	0.82%	10,455.0	0.82%	9,780.4	0.77%
e412	Leadership Awards	462	7,053.3	0.55%	7,053.3	0.55%	5,117.1	0.40%
e413	Leadership Awards	113	381.1	0.03%	381.1	0.03%	8,158.5	0.64%
e414	Leadership Awards	67	11,053.7	0.87%	11,053.7	0.87%	10,819.7	0.85%
e421	Leadership Awards	0	0.0	0.00%	0.0	0.00%	11,728.6	0.92%
e422	Leadership Awards	0	0.0	0.00%	0.0	0.00%	3,743.1	0.29%
e424	Leadership Awards	0	0.0	0.00%	0.0	0.00%	6,184.7	0.48%
c01	Class1a	177	8.0	0.00%	8.1	0.00%	1,719.6	0.13%
e10	Class1a	39	2,567.1	0.20%	2,571.4	0.20%	7,619.7	0.60%
e71	Class1a	256	5,716.1	0.45%	5,716.1	0.45%	2,489.2	0.20%
e110	Class1a	119	15,941.3	1.25%	15,941.3	1.25%	4,265.4	0.33%
e125	Class1a	105	13,796.8	1.08%	13,796.8	1.08%	2,849.4	0.22%
e174	Class1a	125	1,843.4	0.14%	1,843.4	0.14%	4,870.2	0.38%
e179	Class1a	25	1,308.0	0.10%	1,308.0	0.10%	3,477.1	0.27%
e182	Class1a	0	0.0	0.00%	0.0	0.00%	345.2	0.03%
e184	Class1a	197	3,009.1	0.24%	3,009.1	0.24%	2,859.6	0.22%
e202	Class1a	258	26,748.8	2.10%	26,748.8	2.10%	45,746.4	3.59%
e220	Class1a	0	0.0	0.00%	0.0	0.00%	398.5	0.03%
e228	Class1a	23	832.4	0.07%	832.4	0.07%	478.2	0.04%
e229	Class1a	4	0.9	0.00%	33.9	0.00%	448.6	0.04%
e266	Class1a	141	422.5	0.03%	422.5	0.03%	6,914.5	0.54%
e268	Class1a	0	0.0	0.00%	0.0	0.00%	459.4	0.04%
e272	Class1a	376	3,449.4	0.27%	3,449.4	0.27%	1,967.2	0.15%
e282	Class1a	274	1,198.8	0.09%	1,198.8	0.09%	734.4	0.06%
e290	Class1a	104	41.3	0.00%	41.3	0.00%	109.9	0.01%
e291	Class1a	0	0.0	0.00%	0.0	0.00%	744.6	0.06%
e300	Class1a	44	1,935.4	0.15%	1,935.4	0.15%	736.0	0.06%
e301	Class1a	64	3,478.3	0.27%	3,478.3	0.27%	1,978.4	0.16%
e304	Class1a	171	2,266.4	0.18%	2,266.4	0.18%	6,986.3	0.55%
e320	Class1a	0	0.0	0.00%	0.0	0.00%	2,219.2	0.17%
e330	Class1a	0	0.0	0.00%	0.0	0.00%	167.1	0.01%
e331	Class1a	820	1,254.9	0.10%	1,254.9	0.10%	1,366.6	0.11%
e332	Class1a	0	0.0	0.00%	0.0	0.00%	650.6	0.05%
e333	Class1a	358	67,740.8	5.31%	67,747.7	5.31%	4,342.6	0.34%
e336	Class1a	0	0.0	0.00%	0.0	0.00%	174.2	0.01%

Project	Project Class	Number of Jobs	Charged kAUs	Charged Utilisation	Used kAUs	Utilisation	Allocated kAUs	Allocation
e342	Class1a	0	0.0	0.00%	0.0	0.00%	512.8	0.04%
e343	Class1a	151	98.3	0.01%	98.3	0.01%	1,460.5	0.11%
e358	Class1a	55	192.9	0.02%	192.9	0.02%	724.7	0.06%
e364	Class1a	0	0.0	0.00%	0.0	0.00%	773.0	0.06%
e365	Class1a	0	0.0	0.00%	0.0	0.00%	1,382.9	0.11%
e375	Class1a	0	0.0	0.00%	0.0	0.00%	2,835.6	0.22%
e377	Class1a	0	0.0	0.00%	0.0	0.00%	1,767.6	0.14%
e378	Class1a	0	0.0	0.00%	0.0	0.00%	4,774.1	0.37%
e385	Class1a	202	10,785.0	0.85%	10,785.0	0.85%	15,956.2	1.25%
e403	Class1a	0	0.0	0.00%	0.0	0.00%	0.0	0.00%
e418	Class1b	67	5,474.6	0.43%	5,474.6	0.43%	2,178.4	0.17%
e316	Direct Access: ARCHER RAP	0	0.0	0.00%	0.0	0.00%	537.6	0.04%
e338	Direct Access: ARCHER RAP	65	2,204.4	0.17%	2,204.4	0.17%	5,403.0	0.42%
e339	Direct Access: ARCHER RAP	220	4,803.5	0.38%	4,803.5	0.38%	4,945.1	0.39%
e347	Direct Access: ARCHER RAP	96	1,705.1	0.13%	1,705.1	0.13%	704.4	0.06%
e348	Direct Access: ARCHER RAP	43	102.9	0.01%	102.9	0.01%	3,786.0	0.30%
e351	Direct Access: ARCHER RAP	21	0.6	0.00%	0.6	0.00%	545.7	0.04%
e352	Direct Access: ARCHER RAP	240	6,691.7	0.52%	6,691.7	0.52%	1,484.9	0.12%
e354	Direct Access: ARCHER RAP	0	0.0	0.00%	0.0	0.00%	959.9	0.08%
e355	Direct Access: ARCHER RAP	27	717.6	0.06%	717.6	0.06%	2,395.2	0.19%
e356	Direct Access: ARCHER RAP	10	880.8	0.07%	880.8	0.07%	919.3	0.07%
e360	Direct Access: ARCHER RAP	1,721	2,189.6	0.17%	2,189.6	0.17%	1,739.8	0.14%
e370	Direct Access: ARCHER RAP	179	4,328.6	0.34%	4,328.6	0.34%	2,100.4	0.16%
e371	Direct Access: ARCHER RAP	117	2,331.3	0.18%	2,331.3	0.18%	4,018.4	0.32%
e373	Direct Access: ARCHER RAP	19	695.9	0.05%	695.9	0.05%	3,028.2	0.24%
e392	Direct Access: ARCHER RAP	134	9,082.9	0.71%	9,082.9	0.71%	4,416.0	0.35%
e393	Direct Access: ARCHER RAP	0	0.0	0.00%	0.0	0.00%	1,989.4	0.16%
e394	Direct Access: ARCHER RAP	2,781	1,064.7	0.08%	1,064.7	0.08%	1,793.9	0.14%
e396	Direct Access: ARCHER RAP	8	35.1	0.00%	35.3	0.00%	2,750.4	0.22%
e397	Direct Access: ARCHER RAP	61	2,659.6	0.21%	2,659.6	0.21%	1,700.7	0.13%
e398	Direct Access: ARCHER RAP	100	287.6	0.02%	287.6	0.02%	2,446.2	0.19%
e399	Direct Access: ARCHER RAP	9	460.6	0.04%	460.6	0.04%	2,818.3	0.22%
e400	Direct Access: ARCHER RAP	8	118.2	0.01%	118.2	0.01%	1,326.3	0.10%
e402	Direct Access: ARCHER RAP	29	0.8	0.00%	0.8	0.00%	721.7	0.06%
e420	Direct Access: ARCHER RAP	48	755.0	0.06%	755.0	0.06%	2,483.6	0.19%
e359	Instant Access	520	2,542.8	0.20%	2,542.8	0.20%	1,503.8	0.12%
e374	Instant Access	0	0.0	0.00%	0.0	0.00%	4,543.7	0.36%
e376	Instant Access	94	1,600.8	0.13%	1,600.8	0.13%	3,315.7	0.26%
e380	Instant Access	9	1.9	0.00%	1.9	0.00%	133.8	0.01%
e381	Instant Access	0	0.0	0.00%	0.0	0.00%	197.8	0.02%
e383	Instant Access	0	0.0	0.00%	0.0	0.00%	182.8	0.01%

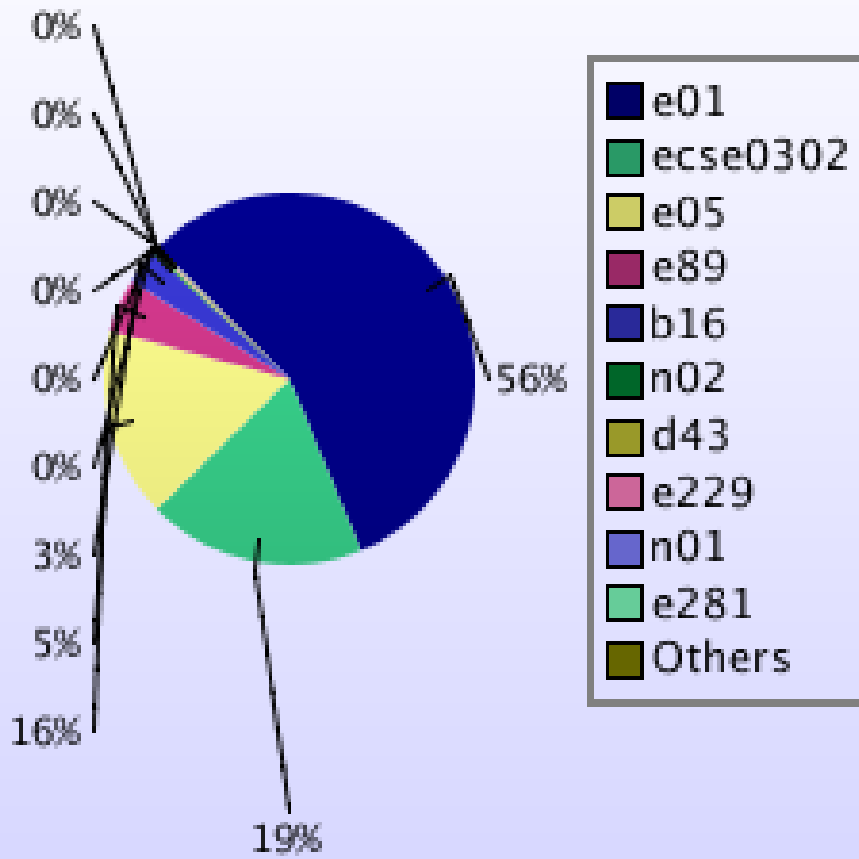
Project	Project Class	Number of Jobs	Charged kAUs	Charged Utilisation	Used kAUs	Utilisation	Allocated kAUs	Allocation
e384	Instant Access	0	0.0	0.00%	0.0	0.00%	198.9	0.02%
e386	Instant Access	7	139.9	0.01%	139.9	0.01%	195.7	0.02%
e387	Instant Access	0	0.0	0.00%	0.0	0.00%	198.9	0.02%
e388	Instant Access	0	0.0	0.00%	0.0	0.00%	179.1	0.01%
e389	Instant Access	0	0.0	0.00%	0.0	0.00%	198.9	0.02%
e390	Instant Access	0	0.0	0.00%	0.0	0.00%	197.8	0.02%
e391	Instant Access	54	285.2	0.02%	285.2	0.02%	197.8	0.02%
e395	Instant Access	17	447.1	0.04%	447.1	0.04%	186.0	0.01%
e401	Instant Access	0	0.0	0.00%	0.0	0.00%	1,432.4	0.11%
e404	Instant Access	0	0.0	0.00%	0.0	0.00%	195.7	0.02%
e405	Instant Access	0	0.0	0.00%	0.0	0.00%	192.6	0.02%
e406	Instant Access	0	0.0	0.00%	0.0	0.00%	191.5	0.02%
e407	Instant Access	0	0.0	0.00%	0.0	0.00%	1,522.3	0.12%
e408	Instant Access	6	0.0	0.00%	0.1	0.00%	2,184.8	0.17%
e409	Instant Access	0	0.0	0.00%	0.0	0.00%	195.7	0.02%
e416	Instant Access	0	0.0	0.00%	0.0	0.00%	196.7	0.02%
e417	Instant Access	144	909.2	0.07%	909.2	0.07%	167.4	0.01%
e423	Instant Access	30	21.8	0.00%	21.8	0.00%	52.3	0.00%
e425	Instant Access	9	670.7	0.05%	670.7	0.05%	81.9	0.01%
e428	Instant Access	0	0.0	0.00%	0.0	0.00%	43.9	0.00%
r10	RDF: Pilot	0	0.0	0.00%	0.0	0.00%	2.7	0.00%
e415	Training	11	366.1	0.03%	366.1	0.03%	1,973.7	0.15%
e382	Service	209	1,562.3	0.12%	1,562.3	0.12%	2,652.0	0.21%
<b>EPSRC Total</b>		<b>50,728</b>	<b>792,931.9</b>	<b>62.18%</b>	<b>814,534.2</b>	<b>63.87%</b>	<b>820,395.2</b>	<b>64.33%</b>
n01	Consortia	4,486	52,978.0	4.15%	52,745.2	4.14%	61,763.9	4.84%
n02	Consortia	9,946	119,753.4	9.39%	119,059.5	9.34%	201,370.3	15.79%
n03	Consortia	2,514	46,799.3	3.67%	46,799.5	3.67%	47,589.3	3.73%
n05	Leadership Awards	13	5,764.9	0.45%	5,765.0	0.45%	8,741.2	0.69%
<b>NERC Total</b>		<b>16,959</b>	<b>225,295.6</b>	<b>17.67%</b>	<b>224,369.2</b>	<b>17.59%</b>	<b>319,464.7</b>	<b>25.05%</b>
b14	Class1a	0	0.0	0.00%	0.0	0.00%	267.9	0.02%
b16	Class1a	12	313.5	0.02%	1,159.9	0.09%	411.0	0.03%
e329	Class1a	12	619.1	0.05%	619.1	0.05%	367.4	0.03%
b17	Research	0	0.0	0.00%	0.0	0.00%	82.7	0.01%
<b>BBSRC Total</b>		<b>24</b>	<b>932.5</b>	<b>0.07%</b>	<b>1,779.0</b>	<b>0.14%</b>	<b>1,128.9</b>	<b>0.09%</b>
pr1u0905	DECI: EXEC	0	0.0	0.00%	0.0	0.00%	47.6	0.00%
pr1u1103	DECI: EXEC	38	6,141.2	0.48%	6,141.2	0.48%	2,253.4	0.18%
pr1u1114	DECI: EXEC	0	0.0	0.00%	0.0	0.00%	210.0	0.02%
pr1u1202	DECI: EXEC	175	8,407.8	0.66%	8,407.9	0.66%	5,263.8	0.41%
pr1u1204	DECI: EXEC	0	0.0	0.00%	0.0	0.00%	2,753.1	0.22%
pr1u1205	DECI: EXEC	0	0.0	0.00%	0.0	0.00%	1,551.7	0.12%
pr1u1211	DECI: EXEC	530	1,597.5	0.13%	1,597.5	0.13%	2,145.4	0.17%
pr1u1212	DECI: EXEC	160	12,660.7	0.99%	12,660.7	0.99%	1,956.5	0.15%
pr1u1213	DECI: EXEC	0	0.0	0.00%	0.0	0.00%	1,225.4	0.10%
pr1u1214	DECI: EXEC	29	382.9	0.03%	382.9	0.03%	448.5	0.04%
pr1u1215	DECI: EXEC	32	105.0	0.01%	105.0	0.01%	1,467.4	0.12%
pr1u1201	DECI: HOME	0	0.0	0.00%	0.0	0.00%	0.1	0.00%
pr1u1203	DECI: HOME	0	0.0	0.00%	0.0	0.00%	0.1	0.00%
pr1u1206	DECI: HOME	0	0.0	0.00%	0.0	0.00%	0.1	0.00%
pr1u1207	DECI: HOME	0	0.0	0.00%	0.0	0.00%	138.3	0.01%
pr1u1208	DECI: HOME	0	0.0	0.00%	0.0	0.00%	0.1	0.00%
pr1u1209	DECI: HOME	0	0.0	0.00%	0.0	0.00%	0.1	0.00%
pr1u1210	DECI: HOME	0	0.0	0.00%	0.0	0.00%	0.1	0.00%
<b>PRACE Total</b>		<b>964</b>	<b>29,295.2</b>	<b>2.30%</b>	<b>29,295.3</b>	<b>2.30%</b>	<b>19,461.4</b>	<b>1.53%</b>
ecse0101	eCSE	0	0.0	0.00%	0.0	0.00%	47.7	0.00%
ecse0102	eCSE	0	0.0	0.00%	0.0	0.00%	24.2	0.00%
ecse0103	eCSE	0	0.0	0.00%	0.0	0.00%	45.2	0.00%
ecse0105	eCSE	0	0.0	0.00%	0.0	0.00%	26.0	0.00%
ecse0110	eCSE	0	0.0	0.00%	0.0	0.00%	47.7	0.00%
ecse0113	eCSE	0	0.0	0.00%	0.0	0.00%	30.0	0.00%
ecse0117	eCSE	1	0.5	0.00%	0.5	0.00%	57.1	0.00%
ecse0119	eCSE	0	0.0	0.00%	0.0	0.00%	18.3	0.00%
ecse0202	eCSE	13	0.5	0.00%	0.6	0.00%	49.3	0.00%

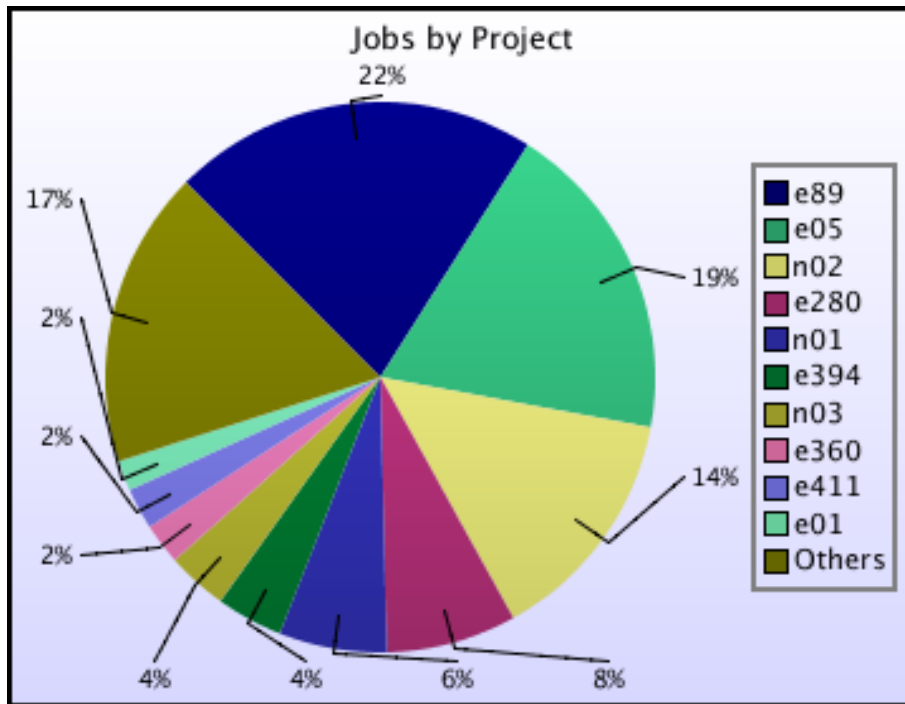
Project	Project Class	Number of Jobs	Charged kAUs	Charged Utilisation	Used kAUs	Utilisation	Allocated kAUs	Allocation
ecse0203	eCSE	0	0.0	0.00%	0.0	0.00%	44.8	0.00%
ecse0206	eCSE	0	0.0	0.00%	0.0	0.00%	41.2	0.00%
ecse0208	eCSE	0	0.0	0.00%	0.0	0.00%	44.3	0.00%
ecse0209	eCSE	0	0.0	0.00%	0.0	0.00%	40.5	0.00%
ecse0211	eCSE	0	0.0	0.00%	0.0	0.00%	40.5	0.00%
ecse0213	eCSE	27	246.1	0.02%	246.1	0.02%	56.1	0.00%
ecse0215	eCSE	0	0.0	0.00%	0.0	0.00%	38.0	0.00%
ecse0217	eCSE	1	0.4	0.00%	0.4	0.00%	37.0	0.00%
ecse0301	eCSE	0	0.0	0.00%	0.0	0.00%	47.0	0.00%
ecse0302	eCSE	19	0.0	0.00%	5,281.6	0.41%	22.5	0.00%
ecse0303	eCSE	1	0.0	0.00%	0.0	0.00%	61.0	0.00%
ecse0307	eCSE	0	0.0	0.00%	0.0	0.00%	41.9	0.00%
ecse0308	eCSE	10	0.7	0.00%	0.7	0.00%	48.6	0.00%
ecse0309	eCSE	9	3.3	0.00%	3.8	0.00%	113.9	0.01%
ecse0310	eCSE	46	94.0	0.01%	94.0	0.01%	20.8	0.00%
ecse0313	eCSE	0	0.0	0.00%	0.0	0.00%	23.6	0.00%
ecse0404	eCSE	0	0.0	0.00%	0.0	0.00%	40.1	0.00%
ecse0414	eCSE	7	15.1	0.00%	15.1	0.00%	35.5	0.00%
ecsepr01	eCSE	0	0.0	0.00%	0.0	0.00%	81.1	0.01%
ecsepr02	eCSE	0	0.0	0.00%	0.0	0.00%	81.5	0.01%
ecsepr03	eCSE	0	0.0	0.00%	0.0	0.00%	81.1	0.01%
ecsepr04	eCSE	0	0.0	0.00%	0.0	0.00%	81.1	0.01%
ecsepr05	eCSE	0	0.0	0.00%	0.0	0.00%	81.1	0.01%
ecsepr06	eCSE	0	0.0	0.00%	0.0	0.00%	81.1	0.01%
ecsepr07	eCSE	0	0.0	0.00%	0.0	0.00%	81.1	0.01%
ecsepr08	eCSE	0	0.0	0.00%	0.0	0.00%	81.1	0.01%
ecsepr09	eCSE	0	0.0	0.00%	0.0	0.00%	81.7	0.01%
ecsepr10	eCSE	0	0.0	0.00%	0.0	0.00%	81.1	0.01%
ecsepr11	eCSE	0	0.0	0.00%	0.0	0.00%	81.7	0.01%
ecsepr12	eCSE	0	0.0	0.00%	0.0	0.00%	81.7	0.01%
ecsepr13	eCSE	0	0.0	0.00%	0.0	0.00%	81.1	0.01%
ecsepr14	eCSE	0	0.0	0.00%	0.0	0.00%	81.7	0.01%
ecsepr15	eCSE	28	214.2	0.02%	214.2	0.02%	81.1	0.01%
ecsepr16	eCSE	0	0.0	0.00%	0.0	0.00%	128.8	0.01%
ecseta01	eCSE	0	0.0	0.00%	0.0	0.00%	81.1	0.01%
ecseta02	eCSE	0	0.0	0.00%	0.0	0.00%	81.7	0.01%
ecseta03	eCSE	0	0.0	0.00%	0.0	0.00%	84.7	0.01%
<b>eCSE Total</b>		<b>162</b>	<b>574.7</b>	<b>0.05%</b>	<b>5,856.9</b>	<b>0.46%</b>	<b>2,738.5</b>	<b>0.21%</b>
d43	ECDF	113	2,919.0	0.23%	2,972.1	0.23%	10,152.3	0.80%
d25	Research	18	250.6	0.02%	250.6	0.02%	1,312.9	0.10%
d35	Research	177	182.7	0.01%	182.7	0.01%	218.2	0.02%
d37	Research	0	0.0	0.00%	0.0	0.00%	1,084.0	0.09%
d41	Research	0	0.0	0.00%	0.0	0.00%	417.3	0.03%
d56	Research	406	7,526.6	0.59%	7,526.6	0.59%	3,313.4	0.26%
d57	Research	0	0.0	0.00%	0.0	0.00%	31.9	0.00%
d60	Research	0	0.0	0.00%	0.0	0.00%	53.4	0.00%
d61	Research	0	0.0	0.00%	0.0	0.00%	54.9	0.00%
d62	Research	64	2.0	0.00%	2.0	0.00%	284.7	0.02%
d63	Research	310	218.8	0.02%	219.6	0.02%	308.0	0.02%
d64	Research	0	0.0	0.00%	0.0	0.00%	231.0	0.02%
d65	Research	0	0.0	0.00%	0.0	0.00%	6,160.2	0.48%
d66	Research	0	0.0	0.00%	0.0	0.00%	0.7	0.00%
d67	Research	0	0.0	0.00%	0.0	0.00%	104.7	0.01%
d69	Research	0	0.0	0.00%	0.0	0.00%	161.7	0.01%
d70	Research	0	0.0	0.00%	0.0	0.00%	70.5	0.01%
d71	Research	0	0.0	0.00%	0.0	0.00%	1,335.6	0.10%
d72	Research	0	0.0	0.00%	0.0	0.00%	604.9	0.05%
d73	Research	74	12,486.0	0.98%	12,486.0	0.98%	9,617.1	0.75%
d75	Research	0	0.0	0.00%	0.0	0.00%	89.3	0.01%
d76	Research	0	0.0	0.00%	0.0	0.00%	96.2	0.01%
d78	Research	0	0.0	0.00%	0.0	0.00%	162.6	0.01%
d79	Research	0	0.0	0.00%	0.0	0.00%	327.8	0.03%
d81	Research	2	185.1	0.01%	185.1	0.01%	155.1	0.01%

Project	Project Class	Number of Jobs	Charged kAUs	Charged Utilisation	Used kAUs	Utilisation	Allocated kAUs	Allocation
e324	Research	24	1,642.1	0.13%	1,642.1	0.13%	561.8	0.04%
i01	Industrial	0	0.0	0.00%	0.0	0.00%	36.0	0.00%
i02	Industrial	0	0.0	0.00%	0.0	0.00%	0.6	0.00%
i03	Industrial	0	0.0	0.00%	0.0	0.00%	1,785.4	0.14%
i04	Industrial	0	0.0	0.00%	0.0	0.00%	22.6	0.00%
i06	Industrial	0	0.0	0.00%	0.0	0.00%	45.2	0.00%
i10	Industrial	0	0.0	0.00%	0.0	0.00%	42.7	0.00%
i13	Industrial	0	0.0	0.00%	0.0	0.00%	1.6	0.00%
i15	Industrial	0	0.0	0.00%	0.0	0.00%	197.4	0.02%
i17	Industrial	0	0.0	0.00%	0.0	0.00%	2.0	0.00%
x06	Industrial	0	0.0	0.00%	0.0	0.00%	4.5	0.00%
x08	Industrial	6	1.3	0.00%	1.3	0.00%	57.3	0.00%
d59	Training	0	0.0	0.00%	0.0	0.00%	318.5	0.02%
d68	Training	62	307.2	0.02%	307.2	0.02%	412.1	0.03%
d74	Training	0	0.0	0.00%	0.0	0.00%	73.2	0.01%
d39	Service	0	0.0	0.00%	0.0	0.00%	75.9	0.01%
d77	Service	0	0.0	0.00%	0.0	0.00%	23.8	0.00%
d80	Service	1	0.4	0.00%	0.4	0.00%	108.6	0.01%
i14	Service	0	0.0	0.00%	0.0	0.00%	405.8	0.03%
y01	Service	0	0.0	0.00%	0.0	0.00%	72.6	0.01%
y02	Service	4	69.2	0.01%	69.2	0.01%	505.9	0.04%
y07	Service	14	0.1	0.00%	0.2	0.00%	47.0	0.00%
z02	Service	0	0.0	0.00%	0.0	0.00%	239.6	0.02%
z99	Service	29	0.3	0.00%	0.3	0.00%	5.9	0.00%
DirectorsTime Total		1,304	25,791.3	2.02%	25,845.3	2.03%	41,394.4	3.25%
y14	Training	140	546.0	0.04%	382.2	0.03%	229.4	0.02%
z01	Service	403	2,520.0	0.20%	2,366.3	0.19%	7,076.9	0.55%
CSE Total		543	3,066.1	0.24%	2,748.5	0.22%	7,306.2	0.57%
w01	Service	3	0.0	0.00%	0.0	0.00%	165.8	0.01%
w02	Service	0	0.0	0.00%	0.0	0.00%	165.8	0.01%
w03	Service	82	524.5	0.04%	524.5	0.04%	157.9	0.01%
w04	Service	0	0.0	0.00%	0.0	0.00%	165.8	0.01%
w05	Service	65	10.0	0.00%	10.0	0.00%	165.8	0.01%
y21	Service	0	0.0	0.00%	0.0	0.00%	165.8	0.01%
z14	Service	0	0.0	0.00%	0.0	0.00%	196.1	0.02%
Internal Total		150	534.5	0.04%	534.5	0.04%	1,182.9	0.09%
Total		70,834	1,078,421.8	84.56%	1,104,962.8	86.65%	1,213,072.3	95.12%



### Uncharged Use by Project

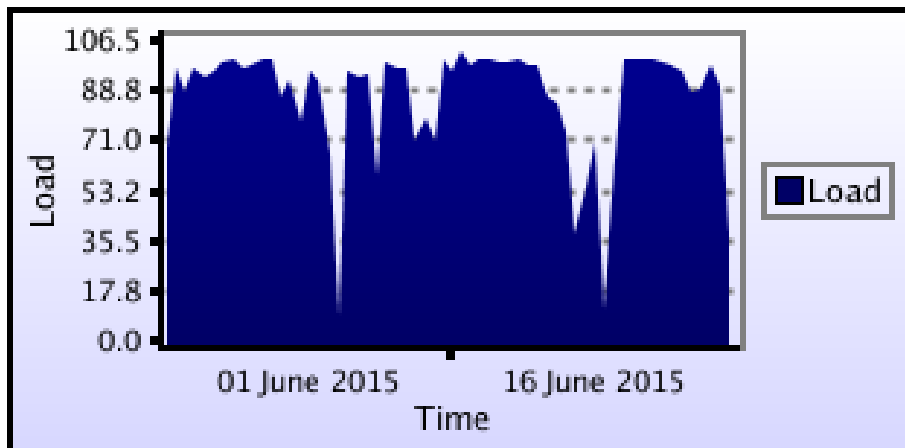




### kAUs (by Size)

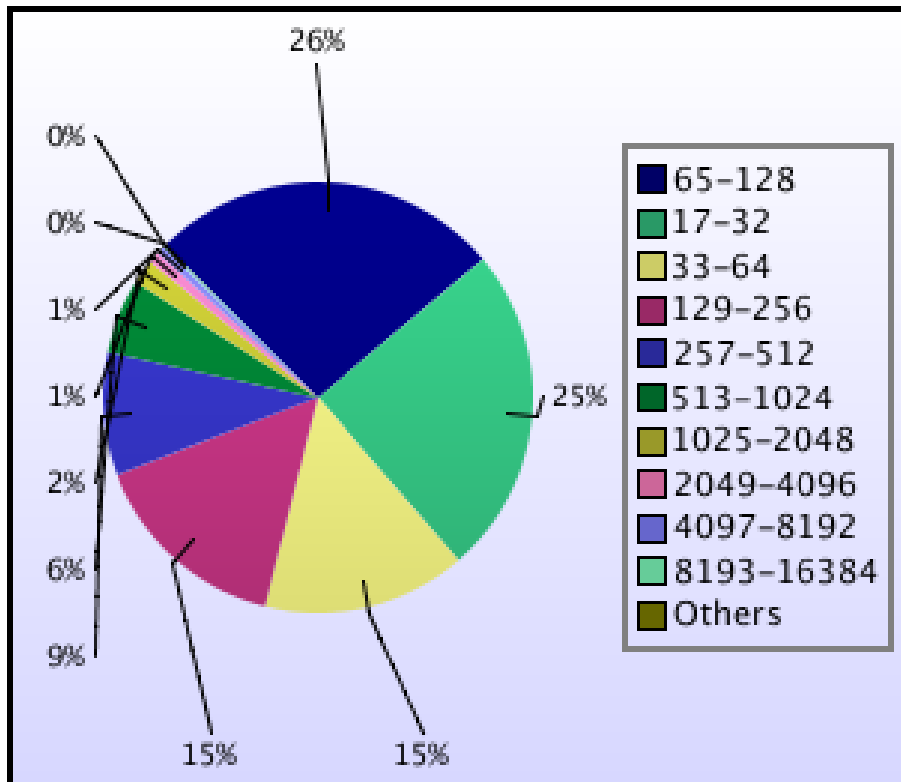
Size	kAUs	Number of Jobs
17-32	13,270.325	17,514
33-64	18,344.147	10,863
65-128	90,208.503	18,697
129-256	123,227.633	10,725
257-512	195,611.419	6,593
513-1024	234,850.822	3,959
1025-2048	139,090.894	1,300
2049-4096	135,742.246	611
4097-8192	84,442.17	430
8193-16384	38,698.839	113
16385-32768	668.258	12
32769-65536	104.76	2
65537-131072	184.691	1

### Load plots

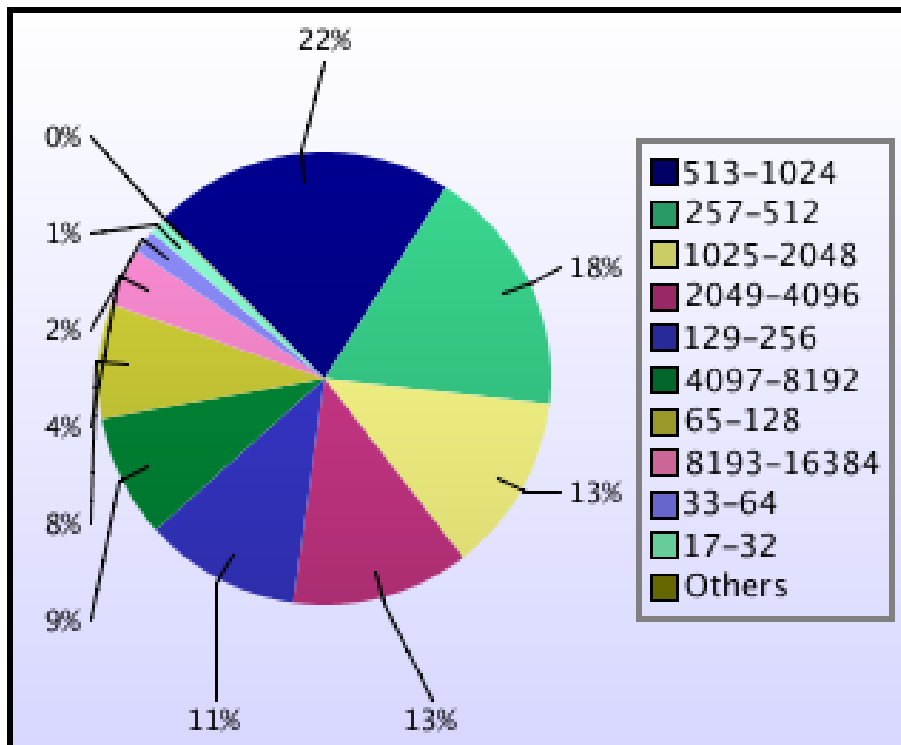


Percentage load on machine

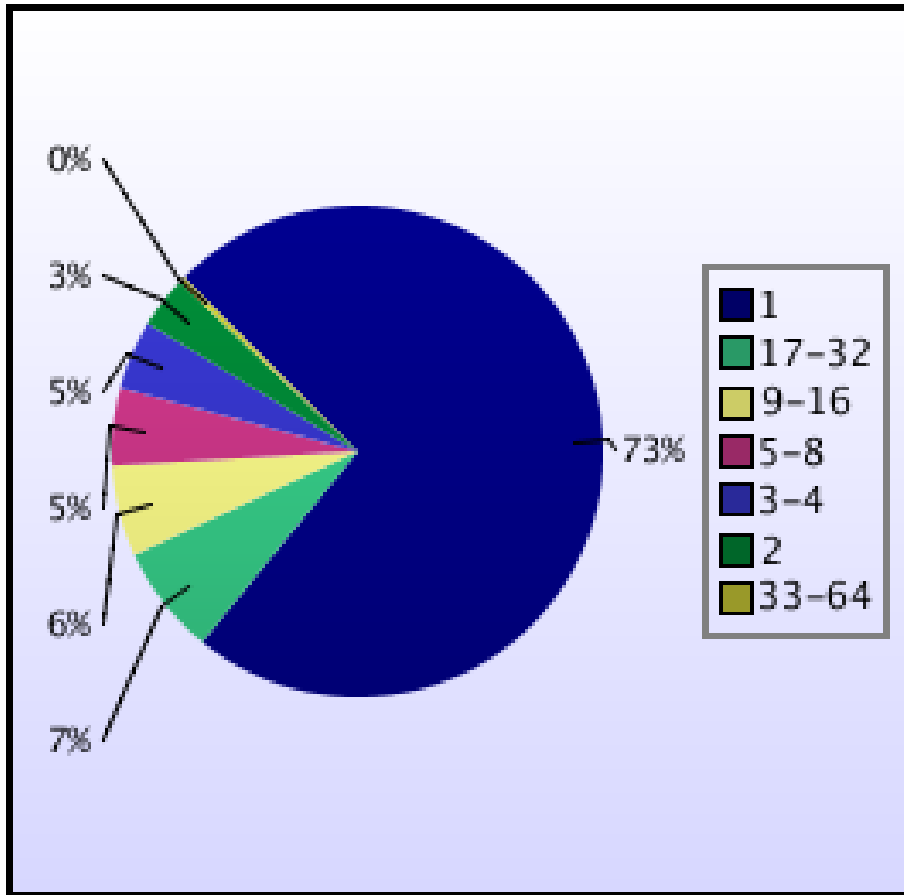




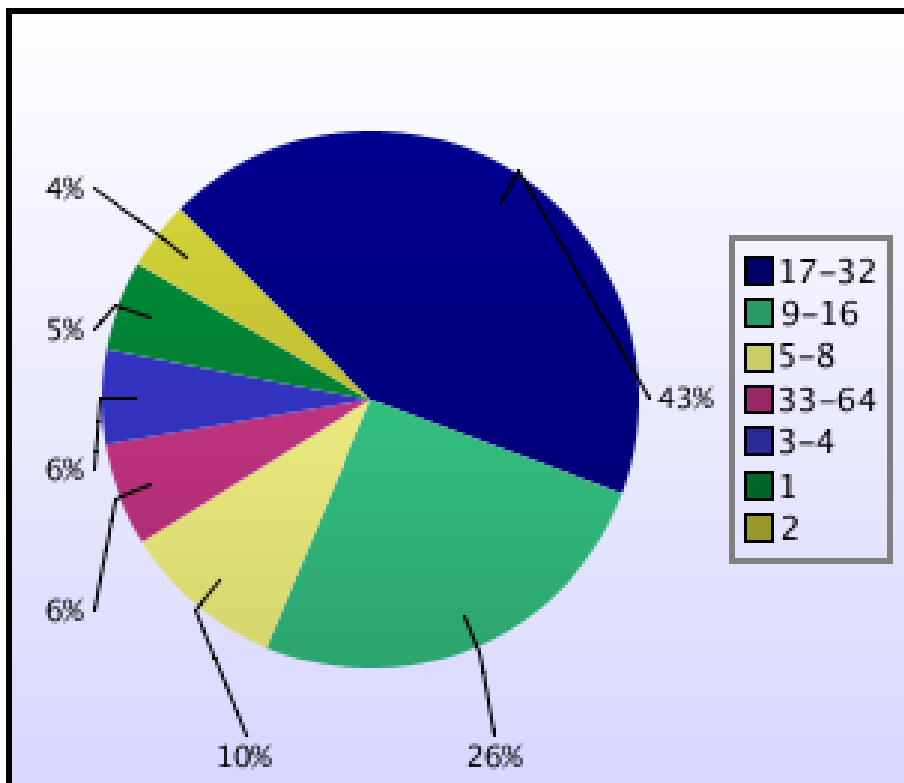
Jobs by Size



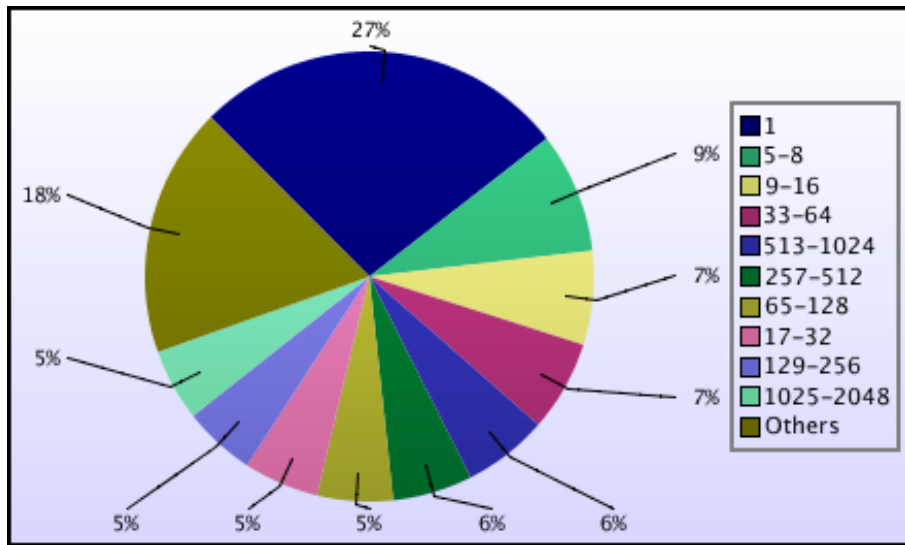
kAUs used by Size



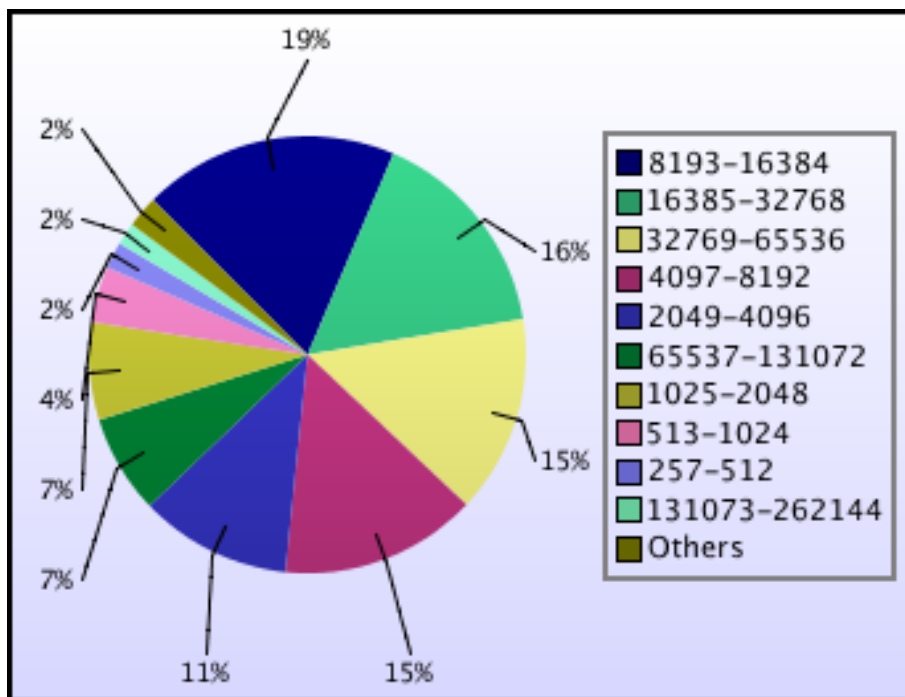
Jobs grouped by wall-clock-hours



KAUs used grouped by wall-clock-hours



Jobs grouped by core-hours

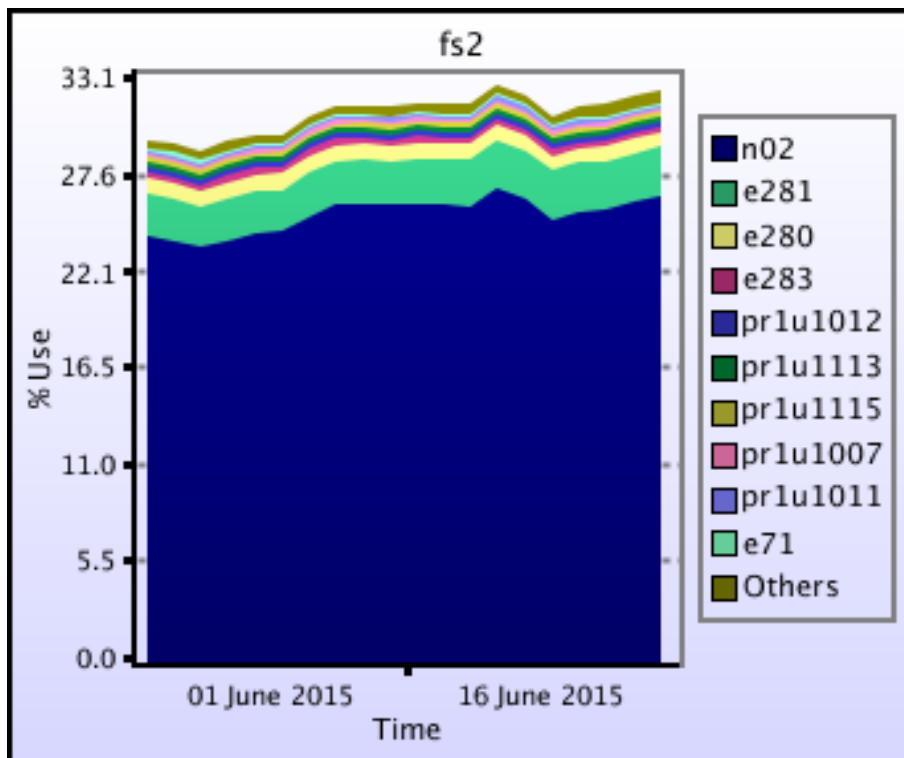


kAUs used grouped by core-hours

## Disk usage

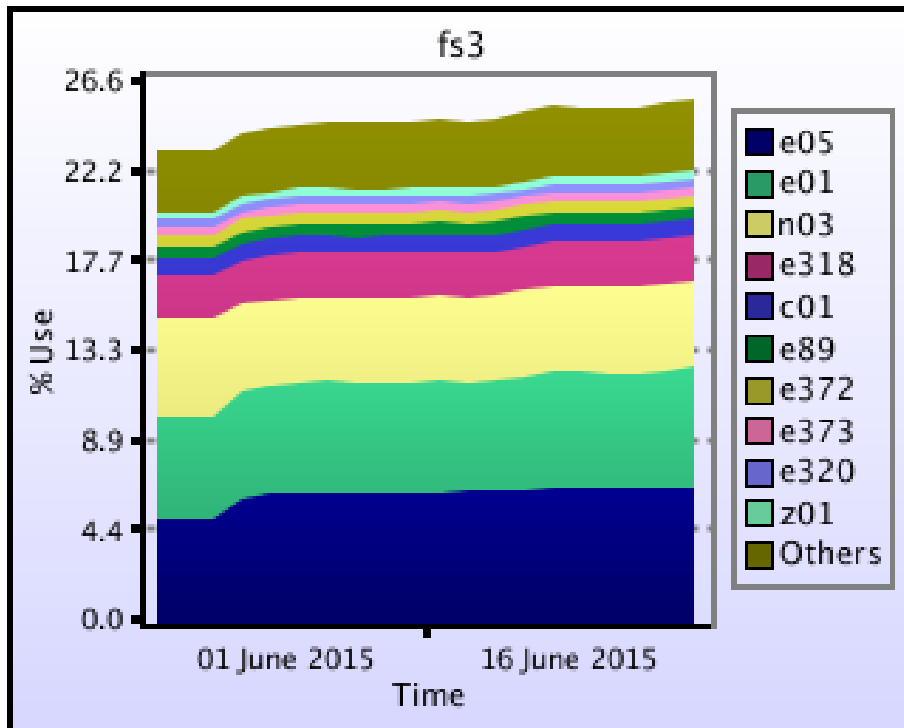
### Disk usage for work (fs2)

This is a plot of Disk Use on fs2 against time. The plot is divided into a number of classes according to Project. This is a stacked plot so the top of the plot represents the total usage at a given time.



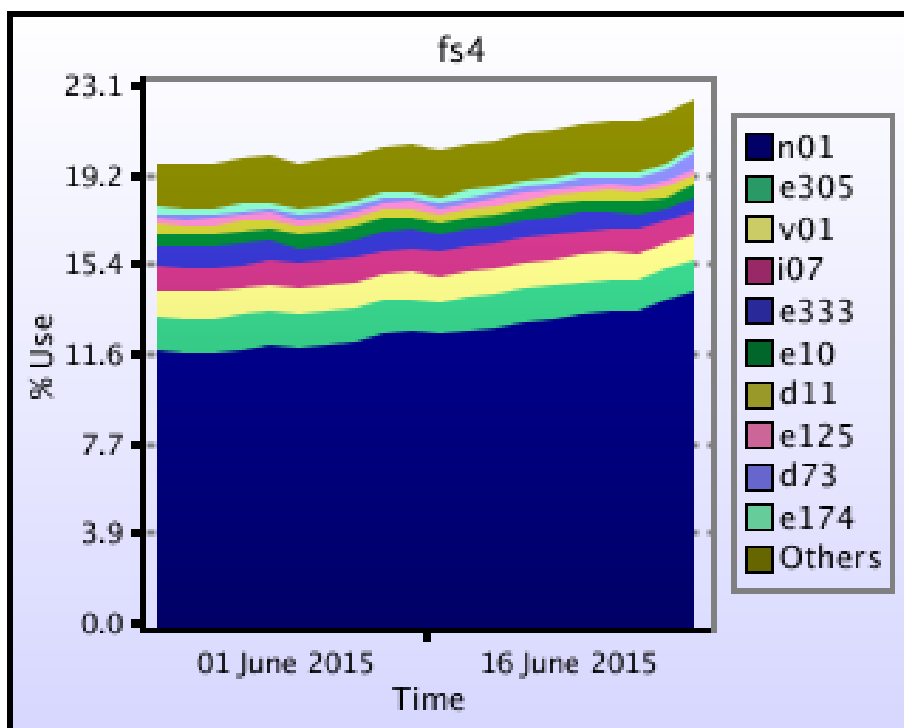
### Disk usage for work (fs3)

This is a plot of Disk Use on fs3 against time. The plot is divided into a number of classes according to Project. This is a stacked plot so the top of the plot represents the total usage at a given time.



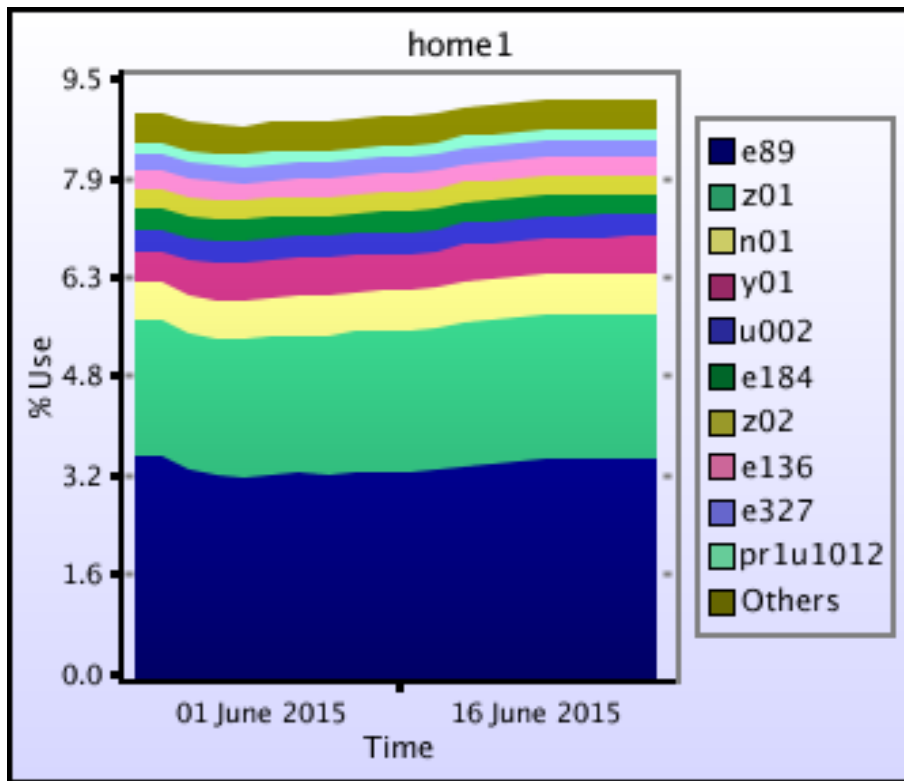
### Disk usage for work (fs4)

This is a plot of Disk Use on fs4 against time. The plot is divided into a number of classes according to Project. This is a stacked plot so the top of the plot represents the total usage at a given time.



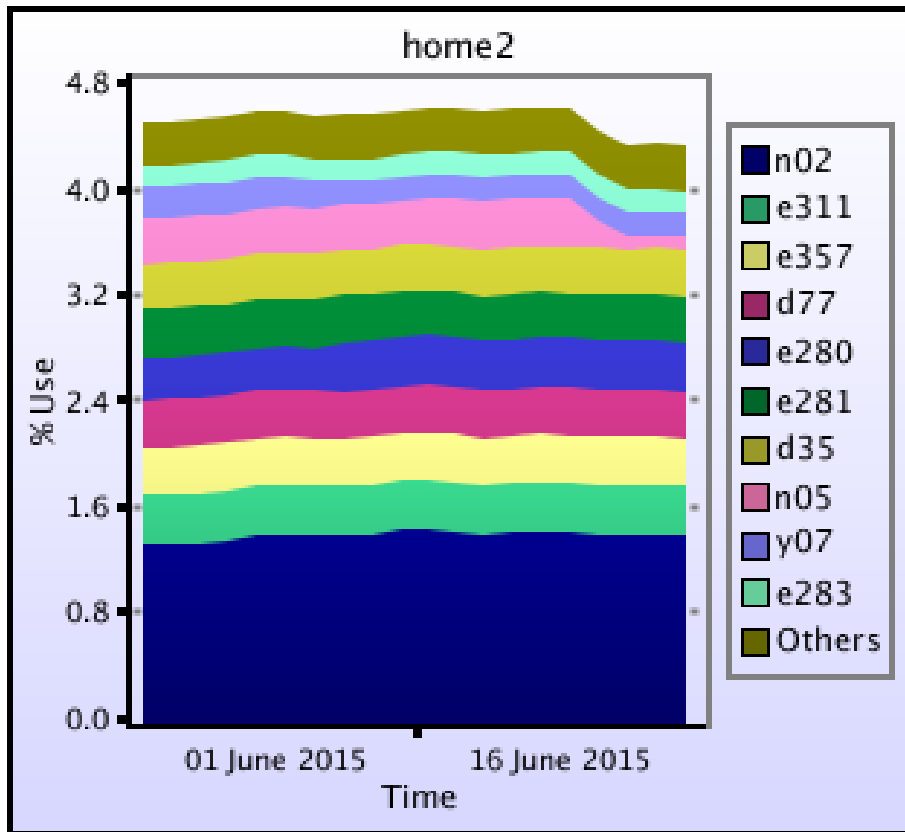
## Disk usage for home (home1)

This is a plot of Disk Use on home1 against time. The plot is divided into a number of classes according to Project. This is a stacked plot so the top of the plot represents the total usage at a given time.



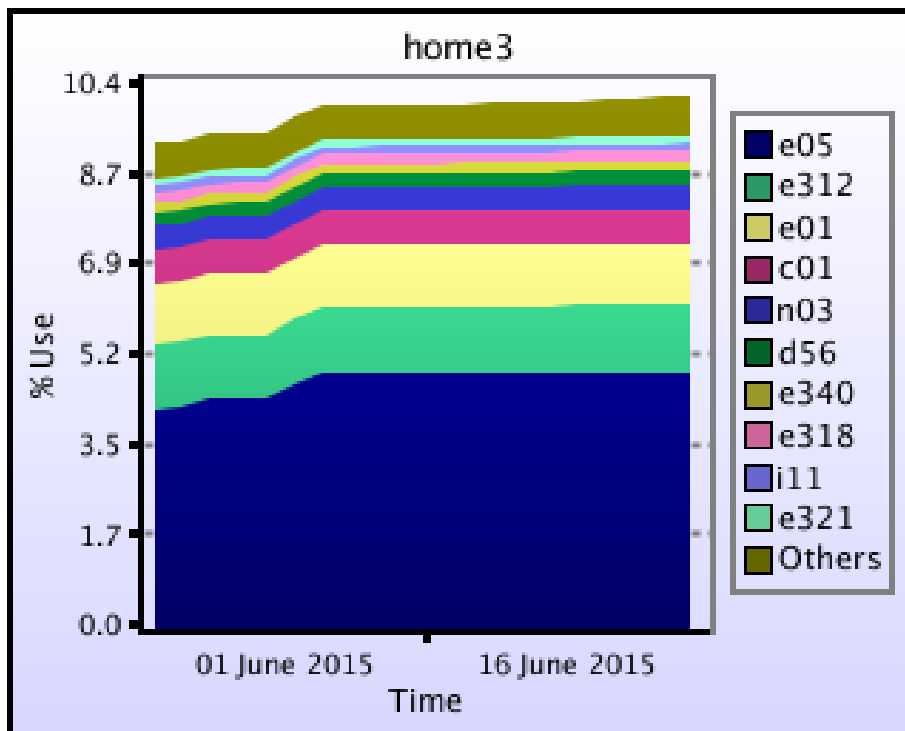
## Disk usage for home (home2)

This is a plot of Disk Use on home2 against time. The plot is divided into a number of classes according to Project. This is a stacked plot so the top of the plot represents the total usage at a given time.



### Disk usage for home (home3)

This is a plot of Disk Use on home3 against time. The plot is divided into a number of classes according to Project. This is a stacked plot so the top of the plot represents the total usage at a given time.



## Disk usage for home (home4)

This is a plot of Disk Use on home4 against time. The plot is divided into a number of classes according to Project. This is a stacked plot so the top of the plot represents the total usage at a given time.

