

# Monthly Reporting

## Report from 01 December 2014 to 31 December 2014

### Report for Resource Pool XC on ARCHER

A total of 1317772.797 kAU were available during this period.

#### Use and Allocations (by Project)

In the following table Charged refers to usage which was charged against the project Allocation. This excludes any usage discounted via incentive schemes. The (Allocation) column is the time allocated to the project, scaled according to the reporting period and shown as a fraction of the available resources.

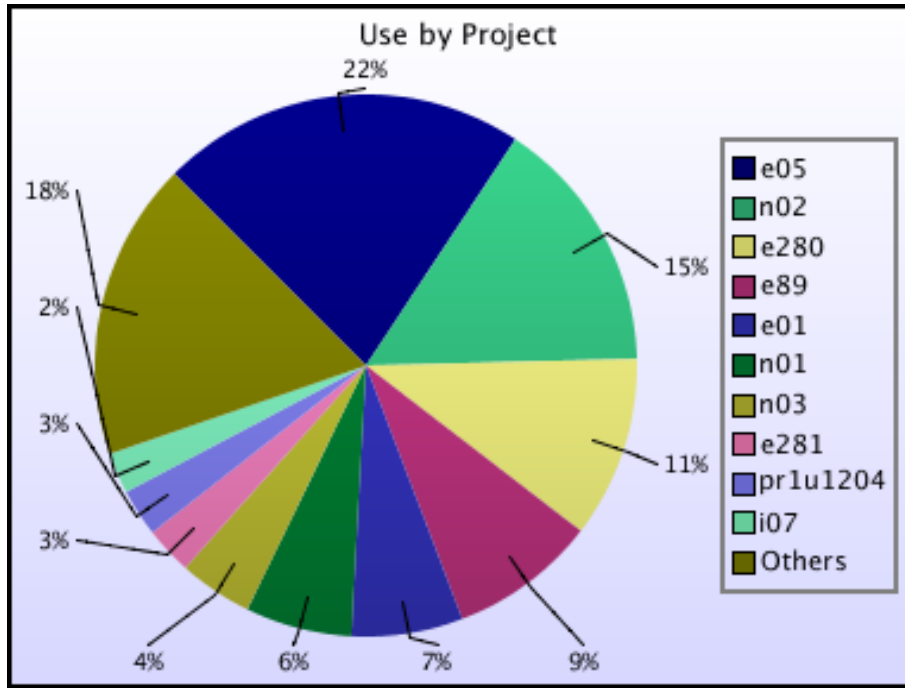
Project	Project Class	Number of Jobs	Charged kAUs	Charged Utilisation	Used kAUs	Utilisation	Allocation
e01	Consortia	1021	55258.9	4.19%	69853.2	5.30%	4.19%
e05	Consortia	9154	214894.7	16.31%	229020.9	17.38%	12.58%
e89	Consortia	5792	92122.4	6.99%	92144.4	6.99%	8.05%
e280	Consortia	17608	112750.9	8.56%	113774.2	8.63%	3.08%
e281	Consortia	535	29830.6	2.26%	29830.6	2.26%	1.43%
e283	Consortia	986	8019.4	0.61%	8023.4	0.61%	1.16%
e305	Consortia	607	11005.4	0.84%	11005.9	0.84%	1.32%
c01	Class1a	71	2376.1	0.18%	2376.1	0.18%	0.24%
e10	Class1a	41	501.1	0.04%	501.1	0.04%	0.60%
e71	Class1a	10	293.1	0.02%	293.1	0.02%	0.20%
e110	Class1a	68	8023.8	0.61%	8023.8	0.61%	0.33%
e125	Class1a	228	3222.5	0.24%	3411.0	0.26%	0.26%
e155	Class1a	1	34.6	0.00%	34.6	0.00%	0.03%
e165	Class1a	0	0.0	0.00%	0.0	0.00%	0.03%
e174	Class1a	930	726.2	0.06%	726.2	0.06%	0.14%
e175	Class1a	319	7445.0	0.56%	12675.8	0.96%	0.14%
e179	Class1a	21	129.1	0.01%	129.1	0.01%	0.36%
e182	Class1a	0	0.0	0.00%	0.0	0.00%	0.03%
e184	Class1a	253	6279.3	0.48%	6279.3	0.48%	0.55%
e191	Class1a	220	3432.3	0.26%	3432.3	0.26%	0.14%
e202	Class1a	104	21302.9	1.62%	21302.9	1.62%	0.74%
e220	Class1a	5	10.5	0.00%	10.5	0.00%	0.04%
e228	Class1a	41	858.6	0.07%	858.6	0.07%	0.04%
e229	Class1a	74	29.6	0.00%	29.6	0.00%	0.04%
e266	Class1a	109	132.4	0.01%	3171.5	0.24%	0.69%
e268	Class1a	0	0.0	0.00%	0.0	0.00%	0.04%
e272	Class1a	178	754.5	0.06%	754.5	0.06%	0.28%
e282	Class1a	39	56.0	0.00%	56.0	0.00%	0.06%
e290	Class1a	208	33.9	0.00%	33.9	0.00%	0.01%
e291	Class1a	0	0.0	0.00%	0.0	0.00%	0.06%
e300	Class1a	0	0.0	0.00%	0.0	0.00%	0.06%
e301	Class1a	7	32.9	0.00%	32.9	0.00%	0.07%
e304	Class1a	30	339.4	0.03%	339.4	0.03%	0.55%
e320	Class1a	0	0.0	0.00%	0.0	0.00%	0.17%
e330	Class1a	0	0.0	0.00%	0.0	0.00%	0.01%
e331	Class1a	0	0.0	0.00%	0.0	0.00%	0.11%
e332	Class1a	0	0.0	0.00%	0.0	0.00%	0.05%
e333	Class1a	42	6361.8	0.48%	6361.8	0.48%	0.34%
e336	Class1a	0	0.0	0.00%	0.0	0.00%	0.01%
e342	Class1a	24	3332.7	0.25%	3332.7	0.25%	0.04%
e343	Class1a	624	9068.0	0.69%	9068.3	0.69%	0.11%
e358	Class1a	0	0.0	0.00%	0.0	0.00%	0.06%
e364	Class1a	0	0.0	0.00%	0.0	0.00%	0.06%
e365	Class1a	0	0.0	0.00%	0.0	0.00%	0.11%
e377	Class1a	0	0.0	0.00%	0.0	0.00%	0.14%
e309	Direct Access: ARCHER RAP	20	921.8	0.07%	921.8	0.07%	0.08%
e310	Direct Access: ARCHER RAP	18	4292.9	0.33%	4292.9	0.33%	0.25%
e312	Direct Access: ARCHER RAP	24	644.1	0.05%	644.1	0.05%	0.09%

Project	Project Class	Number of Jobs	Charged kAUs	Charged Utilisation	Used kAUs	Utilisation	Allocation
e313	Direct Access: ARCHER RAP	0	0.0	0.00%	0.0	0.00%	0.09%
e314	Direct Access: ARCHER RAP	7	569.8	0.04%	569.8	0.04%	0.12%
e316	Direct Access: ARCHER RAP	0	0.0	0.00%	0.0	0.00%	0.04%
e317	Direct Access: ARCHER RAP	32	274.0	0.02%	274.0	0.02%	0.30%
e318	Direct Access: ARCHER RAP	39	19.0	0.00%	19.0	0.00%	0.14%
e319	Direct Access: ARCHER RAP	0	0.0	0.00%	0.0	0.00%	0.05%
e321	Direct Access: ARCHER RAP	72	4149.8	0.31%	4149.8	0.31%	0.11%
e323	Direct Access: ARCHER RAP	18	3928.3	0.30%	3928.3	0.30%	0.11%
e326	Direct Access: ARCHER RAP	0	0.0	0.00%	0.0	0.00%	0.12%
e338	Direct Access: ARCHER RAP	10	3.4	0.00%	3.4	0.00%	0.42%
e339	Direct Access: ARCHER RAP	191	4691.0	0.36%	4691.0	0.36%	0.39%
e346	Direct Access: ARCHER RAP	51	1992.2	0.15%	1992.2	0.15%	0.08%
e347	Direct Access: ARCHER RAP	183	60.4	0.00%	60.4	0.00%	0.07%
e348	Direct Access: ARCHER RAP	294	1815.4	0.14%	1815.4	0.14%	0.30%
e349	Direct Access: ARCHER RAP	0	0.0	0.00%	0.0	0.00%	0.06%
e350	Direct Access: ARCHER RAP	0	0.0	0.00%	0.0	0.00%	0.36%
e351	Direct Access: ARCHER RAP	73	1475.8	0.11%	1475.8	0.11%	0.04%
e352	Direct Access: ARCHER RAP	60	1826.3	0.14%	1826.3	0.14%	0.12%
e354	Direct Access: ARCHER RAP	54	10659.9	0.81%	10659.9	0.81%	0.08%
e355	Direct Access: ARCHER RAP	241	4407.9	0.33%	4407.9	0.33%	0.20%
e356	Direct Access: ARCHER RAP	7	961.9	0.07%	961.9	0.07%	0.07%
e360	Direct Access: ARCHER RAP	42	1567.5	0.12%	1567.5	0.12%	0.14%
e370	Direct Access: ARCHER RAP	0	0.0	0.00%	0.0	0.00%	0.16%
e371	Direct Access: ARCHER RAP	11	0.5	0.00%	0.5	0.00%	0.32%
e372	Direct Access: ARCHER RAP	10	440.4	0.03%	440.4	0.03%	0.33%
e373	Direct Access: ARCHER RAP	4	0.7	0.00%	0.7	0.00%	0.24%
e306	Instant Access	4	157.5	0.01%	157.5	0.01%	0.01%
e307	Instant Access	0	0.0	0.00%	0.0	0.00%	0.01%
e340	Instant Access	11	53.9	0.00%	53.9	0.00%	0.01%
e344	Instant Access	0	0.0	0.00%	0.0	0.00%	0.02%
e359	Instant Access	51	1052.9	0.08%	1052.9	0.08%	0.01%
e362	Instant Access	0	0.0	0.00%	0.0	0.00%	0.02%
e363	Instant Access	0	0.0	0.00%	0.0	0.00%	0.02%
e366	Instant Access	18	0.0	0.00%	0.0	0.00%	0.02%
e367	Instant Access	51	15.2	0.00%	15.2	0.00%	0.00%
e368	Instant Access	0	0.0	0.00%	0.0	0.00%	0.02%
e369	Instant Access	5	61.2	0.00%	61.2	0.00%	0.01%
e374	Instant Access	22	5.3	0.00%	5.3	0.00%	0.03%
e376	Instant Access	85	964.5	0.07%	964.5	0.07%	0.04%

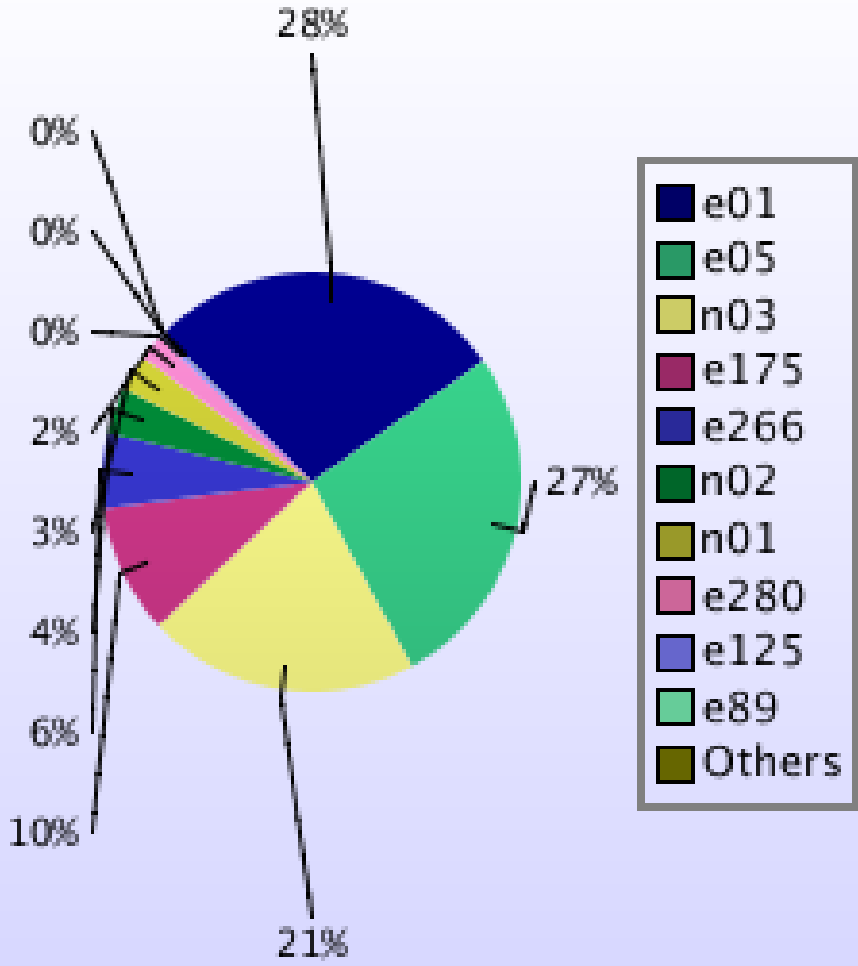
Project	Project Class	Number of Jobs	Charged kAUs	Charged Utilisation	Used kAUs	Utilisation	Allocation
e379	Instant Access	0	0.0	0.00%	0.0	0.00%	0.02%
e380	Instant Access	0	0.0	0.00%	0.0	0.00%	0.01%
e381	Instant Access	0	0.0	0.00%	0.0	0.00%	0.00%
r10	RDF: Pilot	0	0.0	0.00%	0.0	0.00%	0.00%
i07	Industrial	180	25653.7	1.95%	25653.7	1.95%	1.06%
<b>EPSRC Total</b>		<b>41238</b>	<b>671326.2</b>	<b>50.94%</b>	<b>709555.2</b>	<b>53.85%</b>	<b>44.91%</b>
n01	Consortia	4139	65181.4	4.95%	66678.6	5.06%	4.66%
n02	Consortia	10096	159141.4	12.08%	160865.9	12.21%	7.65%
n03	Consortia	1068	35206.8	2.67%	46241.3	3.51%	3.27%
<b>NERC Total</b>		<b>15303</b>	<b>259529.6</b>	<b>19.69%</b>	<b>273785.8</b>	<b>20.78%</b>	<b>15.57%</b>
b14	Class1a	0	0.0	0.00%	0.0	0.00%	0.02%
b16	Class1a	23	189.2	0.01%	189.2	0.01%	0.03%
e329	Class1a	0	0.0	0.00%	0.0	0.00%	0.03%
<b>BBSRC Total</b>		<b>23</b>	<b>189.2</b>	<b>0.01%</b>	<b>189.2</b>	<b>0.01%</b>	<b>0.08%</b>
pr1u0001	DECI: EXEC	0	0.0	0.00%	0.0	0.00%	0.00%
pr1u1103	DECI: EXEC	1	1.5	0.00%	1.5	0.00%	0.19%
pr1u1105	DECI: EXEC	0	0.0	0.00%	0.0	0.00%	0.21%
pr1u1109	DECI: EXEC	407	12563.0	0.95%	12563.0	0.95%	0.19%
pr1u1110	DECI: EXEC	0	0.0	0.00%	0.0	0.00%	0.11%
pr1u1111	DECI: EXEC	1	9.4	0.00%	9.4	0.00%	0.04%
pr1u1112	DECI: EXEC	5	962.3	0.07%	962.3	0.07%	0.17%
pr1u1113	DECI: EXEC	0	0.0	0.00%	0.0	0.00%	0.32%
pr1u1114	DECI: EXEC	0	0.0	0.00%	0.0	0.00%	0.02%
pr1u1115	DECI: EXEC	58	92.5	0.01%	92.5	0.01%	0.10%
pr1u1202	DECI: EXEC	196	3123.7	0.24%	3130.6	0.24%	0.41%
pr1u1204	DECI: EXEC	133	29736.2	2.26%	29736.2	2.26%	0.22%
pr1u1205	DECI: EXEC	0	0.0	0.00%	0.0	0.00%	0.12%
pr1u1211	DECI: EXEC	6	43.5	0.00%	43.5	0.00%	0.11%
pr1u1212	DECI: EXEC	14	15.7	0.00%	15.7	0.00%	0.15%
pr1u1213	DECI: EXEC	12	3294.6	0.25%	3294.6	0.25%	0.10%
pr1u1214	DECI: EXEC	12	20.8	0.00%	20.8	0.00%	0.07%
pr1u1215	DECI: EXEC	0	0.0	0.00%	0.0	0.00%	0.12%
pr1u1101	DECI: HOME	0	0.0	0.00%	0.0	0.00%	0.00%
pr1u1104	DECI: HOME	0	0.0	0.00%	0.0	0.00%	0.00%
pr1u1106	DECI: HOME	0	0.0	0.00%	0.0	0.00%	0.00%
pr1u1108	DECI: HOME	0	0.0	0.00%	0.0	0.00%	0.00%
pr1u1201	DECI: HOME	0	0.0	0.00%	0.0	0.00%	0.00%
pr1u1203	DECI: HOME	0	0.0	0.00%	0.0	0.00%	0.00%
pr1u1206	DECI: HOME	0	0.0	0.00%	0.0	0.00%	0.00%
pr1u1207	DECI: HOME	0	0.0	0.00%	0.0	0.00%	0.01%
pr1u1208	DECI: HOME	0	0.0	0.00%	0.0	0.00%	0.00%
pr1u1209	DECI: HOME	0	0.0	0.00%	0.0	0.00%	0.00%
pr1u1210	DECI: HOME	0	0.0	0.00%	0.0	0.00%	0.00%
pr1u0000	Service	0	0.0	0.00%	0.0	0.00%	0.00%
<b>PRACE Total</b>		<b>845</b>	<b>49863.2</b>	<b>3.78%</b>	<b>49870.1</b>	<b>3.78%</b>	<b>2.64%</b>
ecse0101	eCSE	113	6.9	0.00%	6.9	0.00%	0.00%
ecse0102	eCSE	0	0.0	0.00%	0.0	0.00%	0.00%
ecse0103	eCSE	0	0.0	0.00%	0.0	0.00%	0.00%
ecse0105	eCSE	0	0.0	0.00%	0.0	0.00%	0.00%
ecse0108	eCSE	2	1.4	0.00%	1.4	0.00%	0.00%
ecse0109	eCSE	0	0.0	0.00%	0.0	0.00%	0.01%
ecse0110	eCSE	0	0.0	0.00%	0.0	0.00%	0.00%
ecse0113	eCSE	0	0.0	0.00%	0.0	0.00%	0.00%
ecse0115	eCSE	1	0.1	0.00%	0.1	0.00%	0.00%
ecse0116	eCSE	1	57.6	0.00%	57.6	0.00%	0.01%
ecse0117	eCSE	0	0.0	0.00%	0.0	0.00%	0.00%
ecse0118	eCSE	3	2.3	0.00%	2.3	0.00%	0.00%
ecse0202	eCSE	77	6.8	0.00%	6.9	0.00%	0.00%
ecse0203	eCSE	0	0.0	0.00%	0.0	0.00%	0.00%
ecse0206	eCSE	85	6.6	0.00%	6.6	0.00%	0.00%
ecse0208	eCSE	0	0.0	0.00%	0.0	0.00%	0.00%
ecse0209	eCSE	0	0.0	0.00%	0.0	0.00%	0.00%
ecse0213	eCSE	3	1.0	0.00%	1.0	0.00%	0.00%

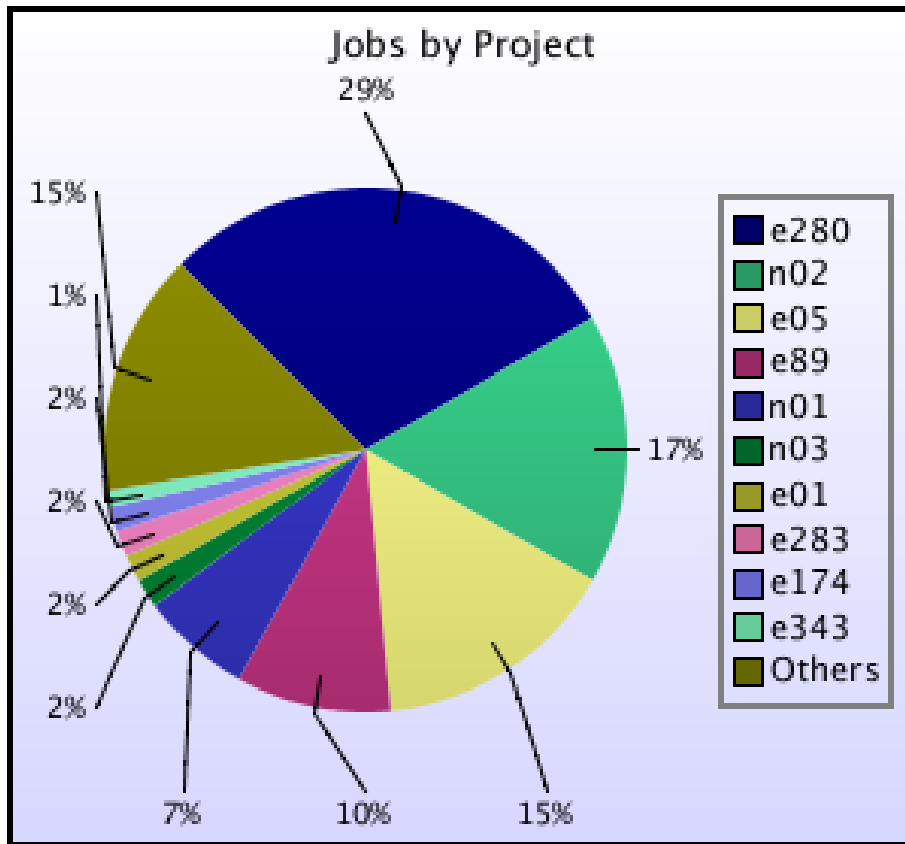
Project	Project Class	Number of Jobs	Charged kAUs	Charged Utilisation	Used kAUs	Utilisation	Allocation
ecse0215	eCSE	3	30.1	0.00%	30.1	0.00%	0.00%
ecsepr01	eCSE	0	0.0	0.00%	0.0	0.00%	0.01%
ecsepr02	eCSE	75	554.9	0.04%	554.9	0.04%	0.01%
ecsepr03	eCSE	0	0.0	0.00%	0.0	0.00%	0.01%
ecsepr04	eCSE	0	0.0	0.00%	0.0	0.00%	0.01%
ecsepr05	eCSE	0	0.0	0.00%	0.0	0.00%	0.01%
ecsepr06	eCSE	0	0.0	0.00%	0.0	0.00%	0.01%
ecsepr07	eCSE	199	864.9	0.07%	864.9	0.07%	0.01%
ecsepr08	eCSE	0	0.0	0.00%	0.0	0.00%	0.01%
ecsepr09	eCSE	0	0.0	0.00%	0.0	0.00%	0.01%
ecsepr10	eCSE	0	0.0	0.00%	0.0	0.00%	0.01%
ecsepr11	eCSE	0	0.0	0.00%	0.0	0.00%	0.01%
ecsepr12	eCSE	0	0.0	0.00%	0.0	0.00%	0.01%
ecsepr13	eCSE	0	0.0	0.00%	0.0	0.00%	0.01%
ecsepr14	eCSE	0	0.0	0.00%	0.0	0.00%	0.01%
ecsepr15	eCSE	0	0.0	0.00%	0.0	0.00%	0.01%
ecseta01	eCSE	0	0.0	0.00%	0.0	0.00%	0.01%
ecseta02	eCSE	0	0.0	0.00%	0.0	0.00%	0.01%
ecseta03	eCSE	0	0.0	0.00%	0.0	0.00%	0.01%
<b>eCSE Total</b>		<b>562</b>	<b>1532.6</b>	<b>0.12%</b>	<b>1532.8</b>	<b>0.12%</b>	<b>0.19%</b>
d43	ECDF	131	10046.4	0.76%	10046.5	0.76%	0.80%
d25	Research	49	244.9	0.02%	244.9	0.02%	0.10%
d35	Research	39	33.1	0.00%	33.2	0.00%	0.02%
d37	Research	1	0.0	0.00%	0.0	0.00%	0.09%
d41	Research	0	0.0	0.00%	0.0	0.00%	0.03%
d56	Research	562	3288.9	0.25%	3288.9	0.25%	0.26%
d57	Research	0	0.0	0.00%	0.0	0.00%	0.00%
d60	Research	0	0.0	0.00%	0.0	0.00%	0.00%
d61	Research	0	0.0	0.00%	0.0	0.00%	0.00%
d62	Research	0	0.0	0.00%	0.0	0.00%	0.02%
d63	Research	0	0.0	0.00%	0.0	0.00%	0.02%
d64	Research	0	0.0	0.00%	0.0	0.00%	0.02%
d65	Research	0	0.0	0.00%	0.0	0.00%	0.48%
d66	Research	0	0.0	0.00%	0.0	0.00%	0.00%
d67	Research	29	0.7	0.00%	0.7	0.00%	0.01%
d69	Research	0	0.0	0.00%	0.0	0.00%	0.01%
d70	Research	0	0.0	0.00%	0.0	0.00%	0.01%
d71	Research	169	136.2	0.01%	136.2	0.01%	0.10%
d72	Research	65	110.1	0.01%	110.1	0.01%	0.05%
d73	Research	0	0.0	0.00%	0.0	0.00%	0.54%
e324	Research	0	0.0	0.00%	0.0	0.00%	0.04%
i01	Industrial	28	2.4	0.00%	2.4	0.00%	0.00%
i02	Industrial	0	0.0	0.00%	0.0	0.00%	0.00%
i03	Industrial	0	0.0	0.00%	0.0	0.00%	0.14%
i04	Industrial	0	0.0	0.00%	0.0	0.00%	0.00%
i06	Industrial	0	0.0	0.00%	0.0	0.00%	0.00%
i10	Industrial	1	1.7	0.00%	1.7	0.00%	0.00%
i13	Industrial	0	0.0	0.00%	0.0	0.00%	0.00%
i15	Industrial	286	1002.2	0.08%	1002.2	0.08%	0.02%
x08	Industrial	24	93.3	0.01%	93.3	0.01%	0.00%
d59	Training	89	12.5	0.00%	12.5	0.00%	0.02%
d68	Training	5	0.0	0.00%	0.0	0.00%	0.03%
d39	Service	0	0.0	0.00%	0.0	0.00%	0.01%
i14	Service	0	0.0	0.00%	0.0	0.00%	0.03%
y01	Service	0	0.0	0.00%	0.0	0.00%	0.01%
y02	Service	22	0.3	0.00%	0.3	0.00%	0.04%
y07	Service	1	0.2	0.00%	0.2	0.00%	0.00%
z02	Service	73	0.3	0.00%	0.9	0.00%	0.02%
z99	Service	27	0.7	0.00%	0.7	0.00%	0.00%
<b>DirectorsTime Total</b>		<b>1601</b>	<b>14973.8</b>	<b>1.14%</b>	<b>14974.6</b>	<b>1.14%</b>	<b>2.95%</b>
y14	Training	591	304.7	0.02%	207.5	0.02%	0.02%
z01	Service	303	484.3	0.04%	484.3	0.04%	0.42%

Project	Project Class	Number of Jobs	Charged kAUs	Charged Utilisation	Used kAUs	Utilisation	Allocation
CSE Total		894	789.1	0.06%	691.9	0.05%	0.44%
Total		60466	998203.7	75.75%	1050599.6	79.73%	66.78%



### Uncharged Use by Project

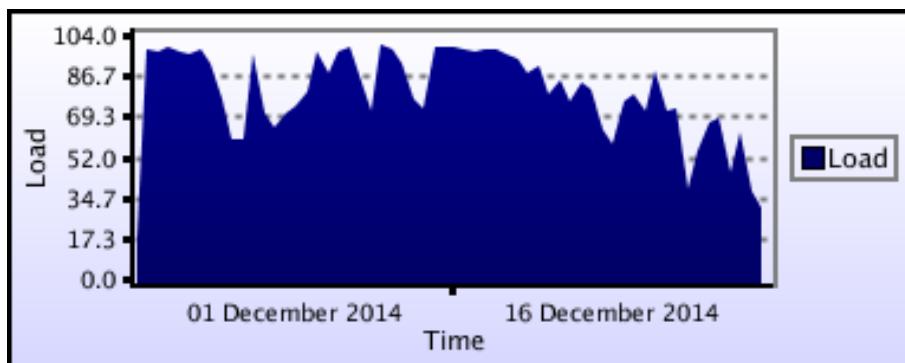




### kAUs (by Size)

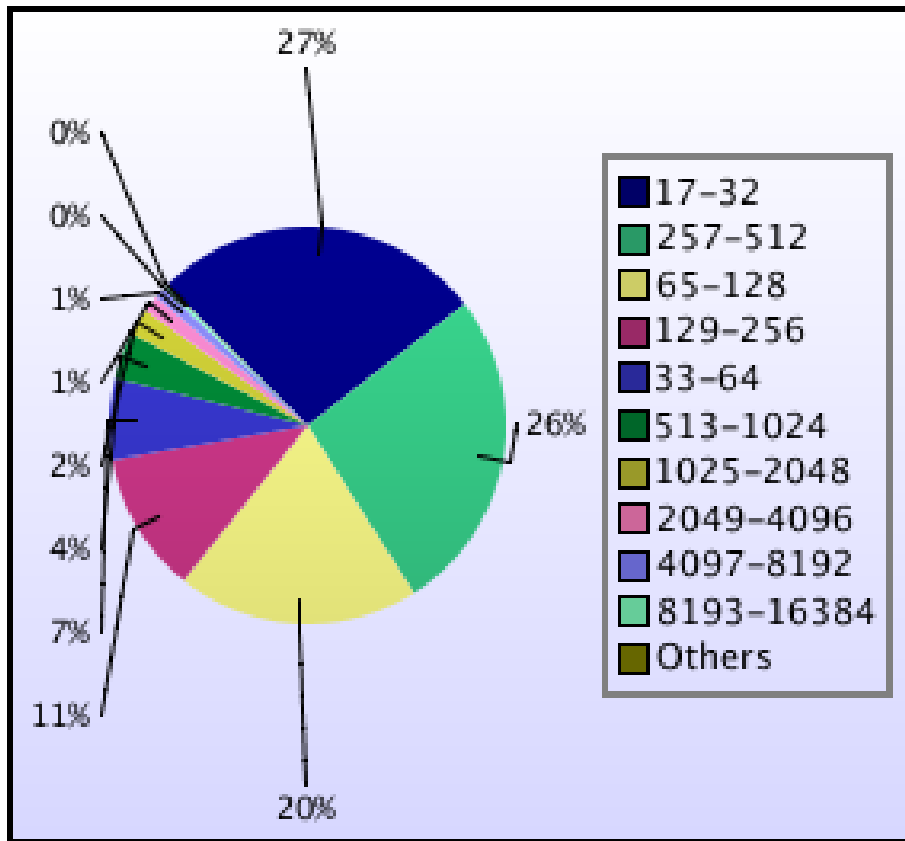
Size	kAUs	Number of Jobs
17-32	12087.107	16346
33-64	19327.167	3993
65-128	60678.891	11955
129-256	89418.211	6928
257-512	124173.861	15990
513-1024	128354.185	2296
1025-2048	108210.61	1319
2049-4096	171814.61	854
4097-8192	193662.245	540
8193-16384	73590.741	205
16385-32768	4048.479	18
32769-65536	9267.405	9
65537-131072	2881.126	5

### Load plots

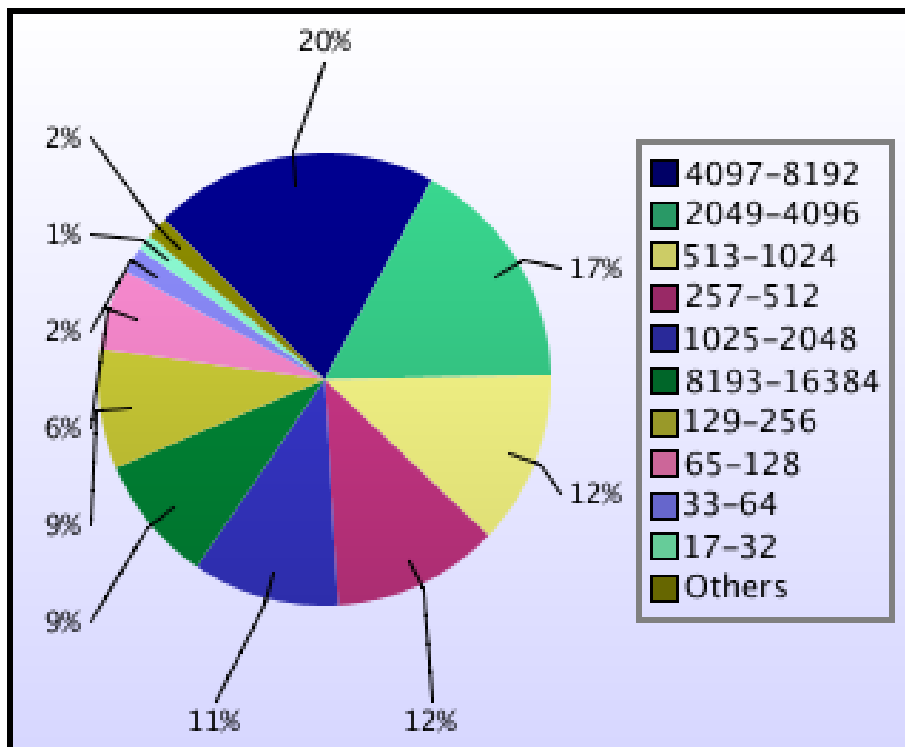


Percentage load on machine

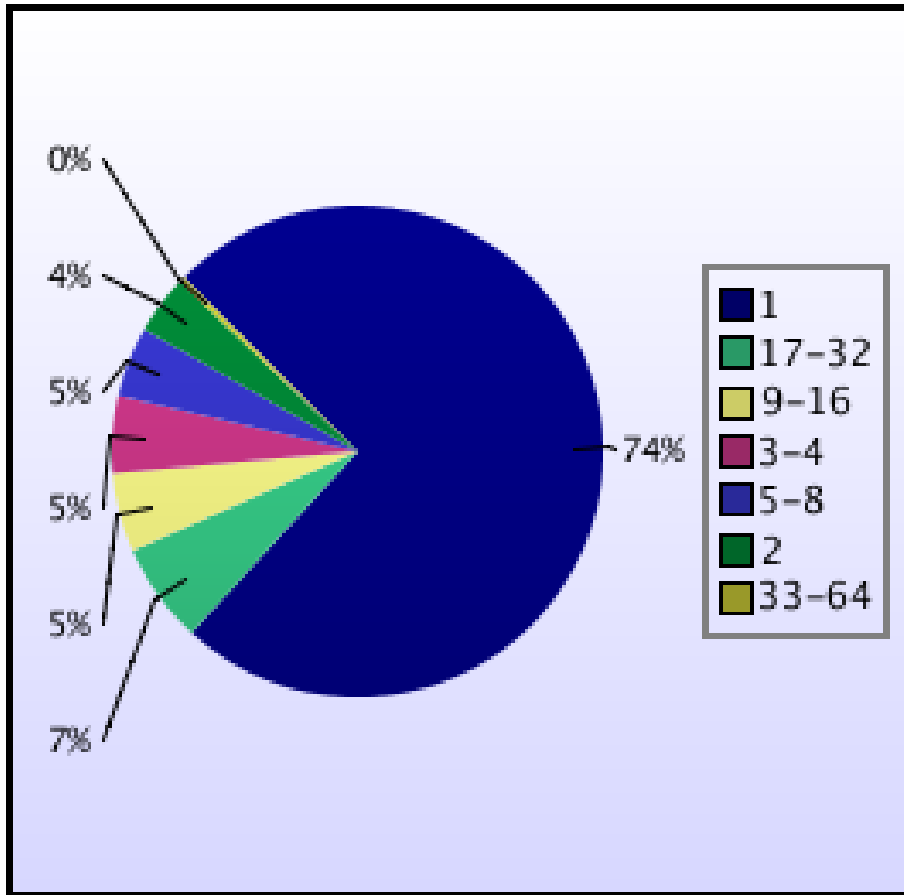




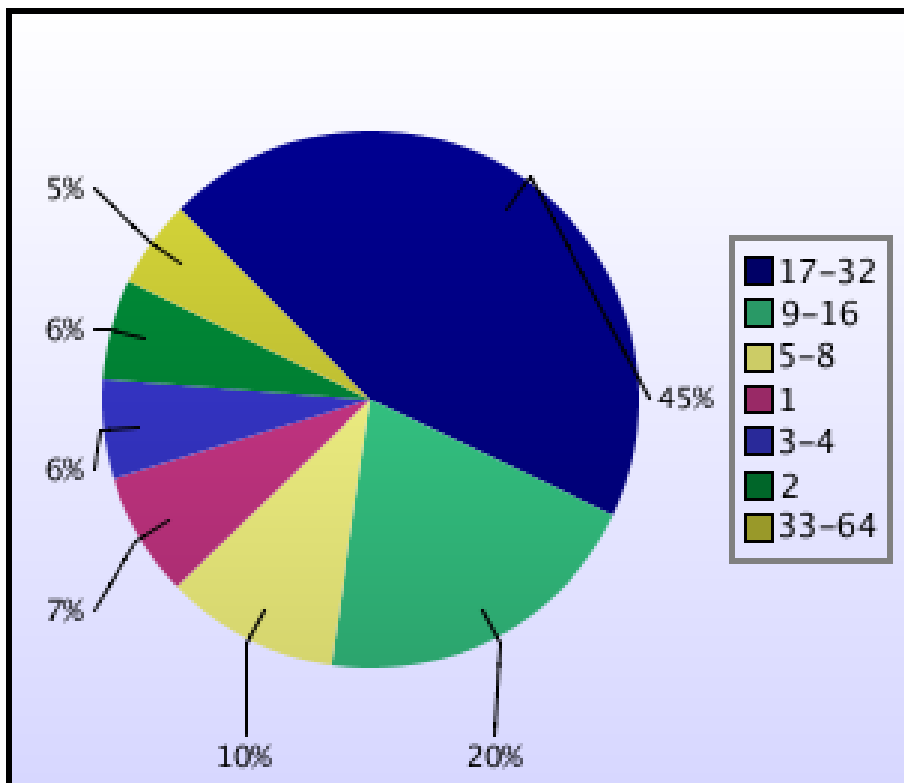
Jobs by Size



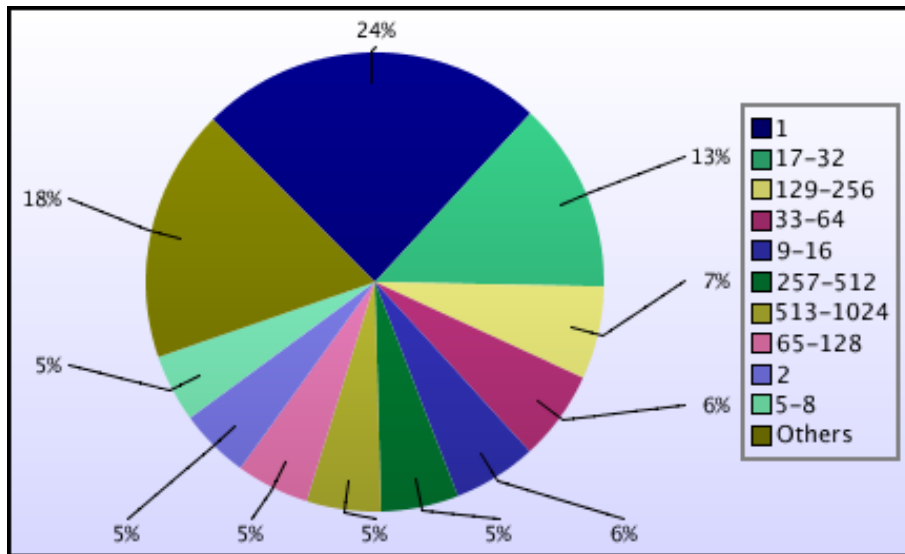
kAUs used by Size



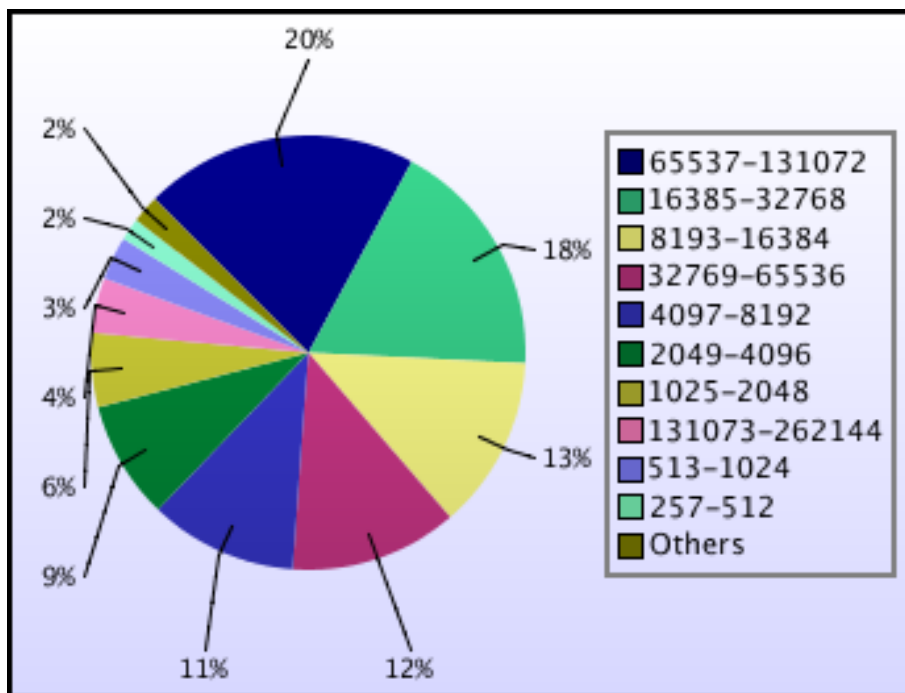
Jobs grouped by wall-clock-hours



KAUs used grouped by wall-clock-hours



Jobs grouped by core-hours

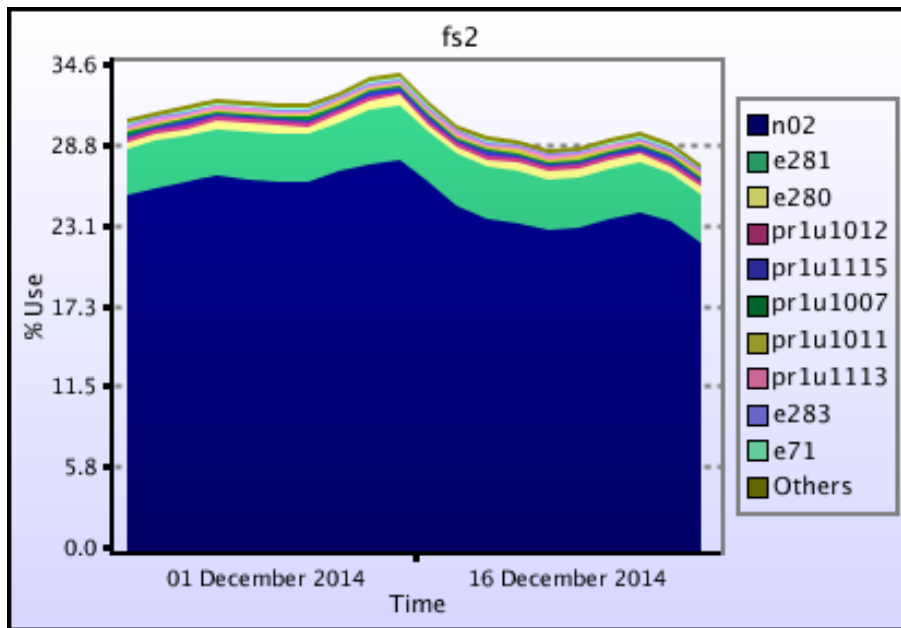


kAUs used grouped by core-hours

## Disk usage

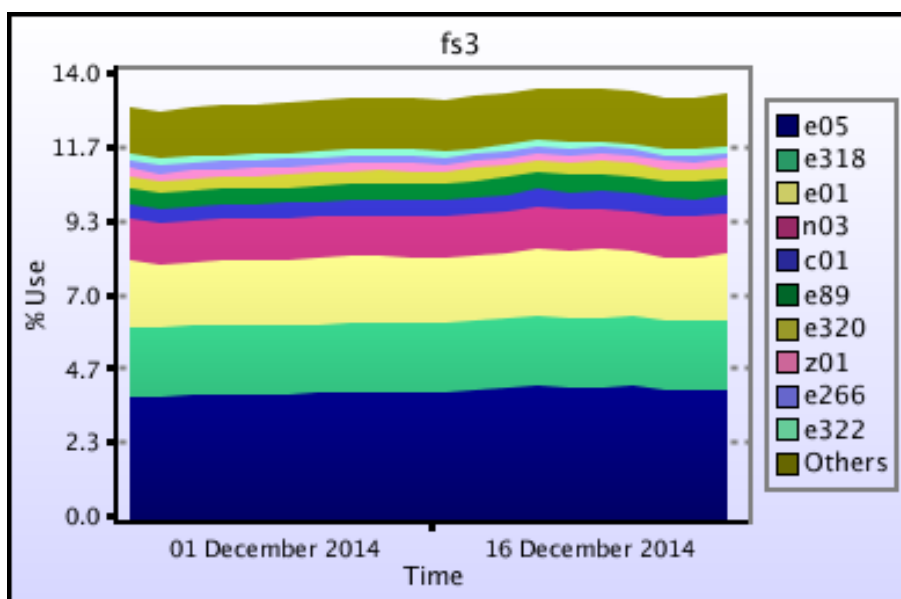
### Disk usage for work (fs2)

This is a plot of Disk Use on fs2 against time. The plot is divided into a number of classes according to Project. This is a stacked plot so the top of the plot represents the total usage at a given time.



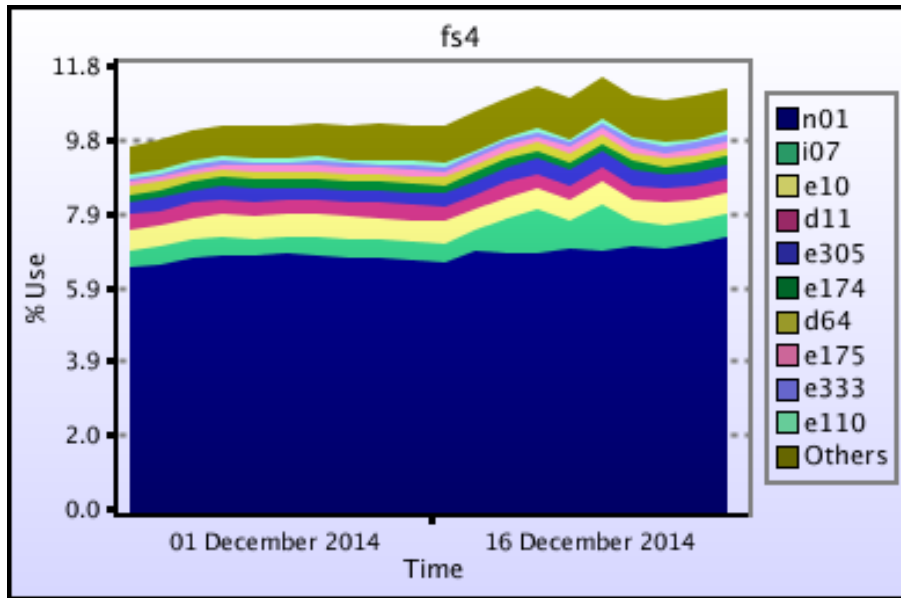
### Disk usage for work (fs3)

This is a plot of Disk Use on fs3 against time. The plot is divided into a number of classes according to Project. This is a stacked plot so the top of the plot represents the total usage at a given time.



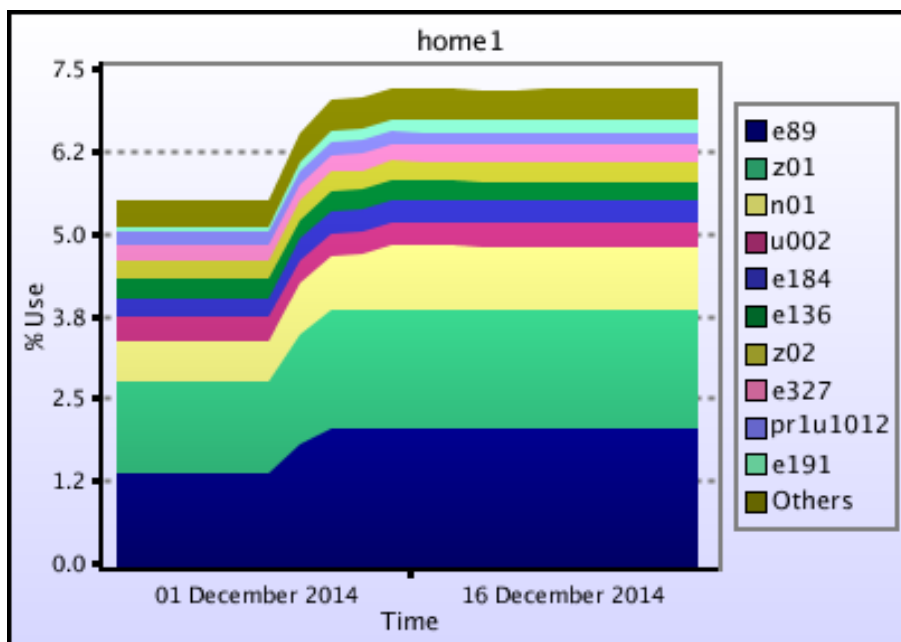
### Disk usage for work (fs4)

This is a plot of Disk Use on fs4 against time. The plot is divided into a number of classes according to Project. This is a stacked plot so the top of the plot represents the total usage at a given time.



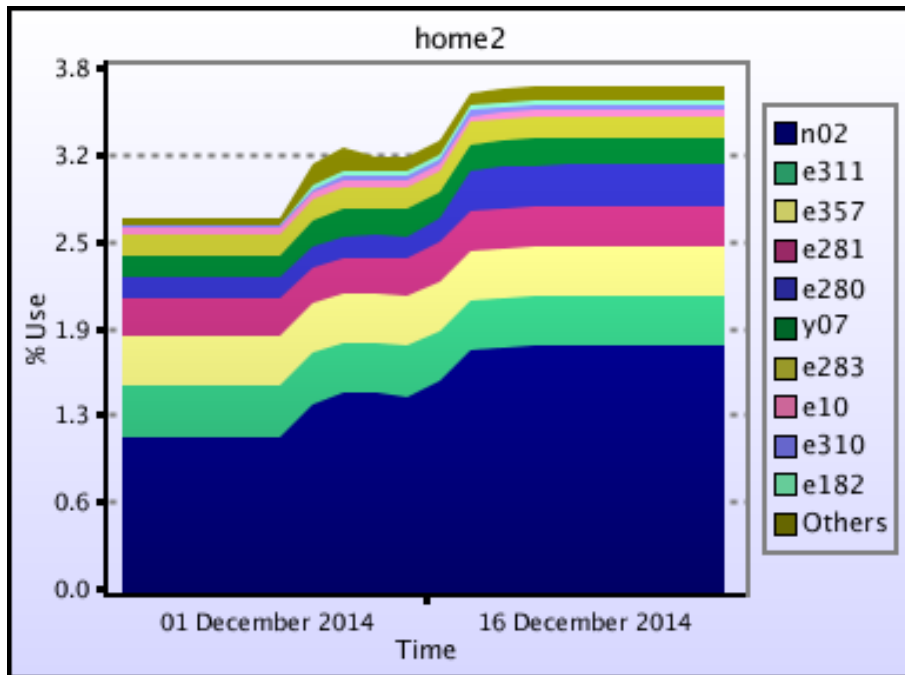
### Disk usage for home (home1)

This is a plot of Disk Use on home1 against time. The plot is divided into a number of classes according to Project. This is a stacked plot so the top of the plot represents the total usage at a given time.



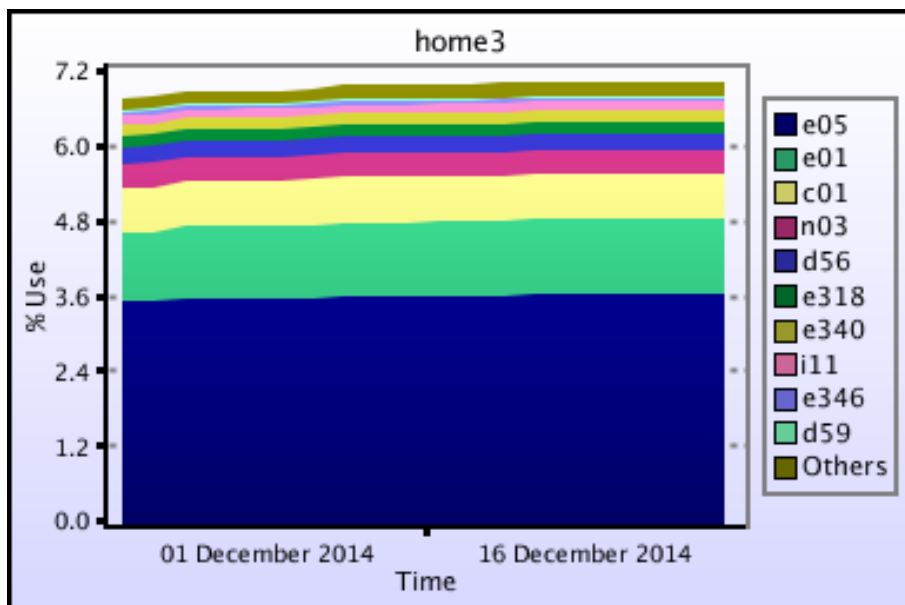
### Disk usage for home (home2)

This is a plot of Disk Use on home2 against time. The plot is divided into a number of classes according to Project. This is a stacked plot so the top of the plot represents the total usage at a given time.



### Disk usage for home (home3)

This is a plot of Disk Use on home3 against time. The plot is divided into a number of classes according to Project. This is a stacked plot so the top of the plot represents the total usage at a given time.



### Disk usage for home (home4)

This is a plot of Disk Use on home4 against time. The plot is divided into a number of classes according to Project. This is a stacked plot so the top of the plot represents the total usage at a given time.

